

Loop / 2 Seats Sofa

Design by Lievore Altherr Molina, 2009

Art. 2800: two seats sofa
 Art. 2810: cover

Two seat sofa with wooden frame and stainless steel feet. Upholstery in fabric, customer's fabric, leather or faux leather. Fully removable cover version available upon request without surcharge.

Dimensions*



* Files CAD 2D - 3D available for download at www.arper.com

Glide finish



S03
Brushed
stainless steel



LU1
Polished
aluminum



Quick Click

Shipment Details

Art. 2800	kg	m ³	lb	ft ³
1 PCS = 1 box	55.00	1.180	121.25	41.671

Materials

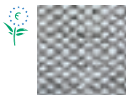
Fabric by kvadrat and no stain



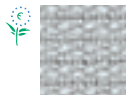
Topas 2
67 colors



Hallingdal 65
58 colors



Remix 2
49 colors



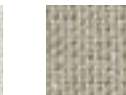
Cava 3
49 colors



Flora 2
33 colors



Pro 2
35 colors



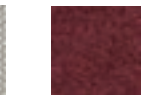
Lazio 2
28 colors



Clara
28 colors



Tempo
22 colors



Divina MD
27 colors



Scuba
24 colors



No Stain
34 colors



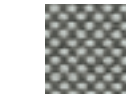
Divina 3
56 colors



Divina
Melange 2
24 colors



Tonus 3
64 colors



Field
24 colors



Steelcut
Trio 2
49 colors



Sunniva
12 colors



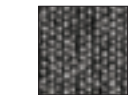
Steelcut 2
37 colors



Pause 4
43 colors



Canvas
28 colors



Savanna
13 colors

Faux leather, Soft leather and chrome free leather by elmo.



PI
Faux
leather
52 colors



PF
Soft
leather
13 colors



ES
Soft leather
Elmosoft®
60 colors

Loop / 2 Seats Sofa

Design by Lievore Altherr Molina, 2009

Accessories



1 2

- 1 Optional polished aluminum glide
- 2 Cushions

Fire Retardant Test

BS7176-07 Medium Hazard: Cava 3, Remix 2, Field, Flora 2, Pro 2, Clara, Tempo, Divina 3, Divina Melange 2, Tonus 3, Topas 2, Hallingdal 65, Steelcut Trio 2.

BS7176-07 Low Hazard: Faux leather, Leather, No Stain. BS5852-1 Sch.4-5 Part1: Faux leather, Leather, Elmosoft. Fabrics (Flora 2, Divina 3, Divina Melange 2, Hallingdal 65, Tonus 3, Topas 2). BS5852-1 Sch.4-5 Part1: Flora, Divina 3, Divina Melange 2, Tonus 3, Topas 2, Hallingdal 65, Steelcut Trio 2, Leather, No Stain.

ITALIA Classe 11M: Cava 3, Field, Tempo, Faux leather

Resistance Test

EN 1022/05
 EN 1728/2000 - EN 15373:2007 6.2.1 3°
 EN 1728/2000 - EN 15373:2007 6.2.2 3°
 EN 1728/2000 - EN 15373:2007 6.5 3°
 EN 1728/2000 - EN 15373:2007 6.6 3°
 EN 1728/2000 - EN 15373:2007 6.7 3°
 EN 1728/2000 - EN 15373:2007 6.8 3°
 EN 1728/2000 - EN 15373:2007 6.10 3°
 EN 1728/2000 - EN 15373:2007 6.15 3°
 EN 1728/2000 - EN 15373:2007 6.16 3°
 EN 1728/2000 - EN 15373:2007 6.17 3°



arper

MODULE SEWING SCHEME



	NON REMOVABLE COVER*	REMOVABLE COVER / FAUX LEATHER	LEATHER
Art. 2800			

F +39 0422 791800

T +39 0422 7918

www.arper.com

* Pro 2, Lazio, Field, Scuba, Cava 2, Remix 2 and COM fabrics are available only in the removable cover version.

Loop / 3 Seats Sofa

Design by Lievore Altherr Molina, 2009

Art. 2801: three seats sofa
 Art. 2811: cover

Upholstered three seat sofa with wooden frame and stainless steel feet. Upholstery in fabric, customer's fabric, leather or faux leather. Fully removable cover version available upon request without surcharge.

Dimensions*



* Files CAD 2D - 3D available for download at www.arper.com

Glide finish



S03
Brushed
stainless steel



LU1
Polished
aluminum



Quick Click

Shipment Details

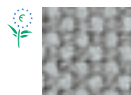
Art. 2801	kg	m ³	lb	ft ³
1 PCS = 1 box	80.00	1.52	176.37	53.678

Materials

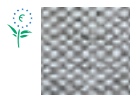
Fabric by kvadrat and no stain



Topas 2
67 colors



Hallingdal 65
58 colors



Remix 2
49 colors



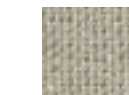
Cava 3
49 colors



Flora 2
33 colors



Pro 2
35 colors



Lazio 2
28 colors



Clara
28 colors



Tempo
22 colors



Divina MD
27 colors



Scuba
24 colors



No Stain
34 colors



Divina 3
56 colors



Divina
Melange 2
24 colors



Tonus 3
64 colors



Field
24 colors



Steelcut
Trio 2
49 colors



Sunniva
12 colors



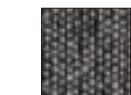
Steelcut 2
37 colors



Pause 4
43 colors



Canvas
28 colors



Savanna
13 colors

Faux leather, Soft leather and chrome free leather by elmo.



PI
Faux
leather
52 colors



PF
Soft
leather
13 colors



ES
Soft leather
Elmosoft®
60 colors

Loop / 3 Seats Sofa

Design by Lievore Altherr Molina, 2009

Accessories



1 2

- 1 Optional polished aluminum glide
- 2 Cushions

Fire Retardant Test

BS7176-07 Medium Hazard: Cava 3, Remix 2, Field, Flora 2, Pro 2, Clara, Tempo, Divina 3, Divina Melange 2, Tonus 3, Topas 2, Hallingdal 65, Steelcut Trio 2.

BS7176-07 Low Hazard: Faux leather, Leather, No Stain. BS5852-1 Sch.4-5 Part1: Faux leather, Leather, Elmosoft. Fabrics (Flora 2, Divina 3, Divina Melange 2, Hallingdal 65, Tonus 3, Topas 2). BS5852-1 Sch.4-5 Part1: Flora, Divina 3, Divina Melange 2, Tonus 3, Topas 2, Hallingdal 65, Steelcut Trio 2, Leather, No Stain.

ITALIA Classe 11M: Cava 3, Field, Tempo, Faux leather

Resistance Test

EN 1022/05
 EN 1728/2000 - EN 15373:2007 6.2.1 2°
 EN 1728/2000 - EN 15373:2007 6.2.2 2°
 EN 1728/2000 - EN 15373:2007 6.5 2°
 EN 1728/2000 - EN 15373:2007 6.6 2°
 EN 1728/2000 - EN 15373:2007 6.7 2°
 EN 1728/2000 - EN 15373:2007 6.8 2°
 EN 1728/2000 - EN 15373:2007 6.10 2°
 EN 1728/2000 - EN 15373:2007 6.15 2°
 EN 1728/2000 - EN 15373:2007 6.16 2°
 EN 1728/2000 - EN 15373:2007 6.17 2°
 EN 1728/2000 - EN 15373:2007 A - A.2 2°

arper



MODULE SEWING SCHEME



	NON REMOVABLE COVER*	REMOVABLE COVER / FAUX LEATHER	LEATHER
Art. 2801			

F +39 0422 791800

T +39 0422 7918

www.arper.com

* Pro 2, Lazio, Field, Scuba, Cava 2, Remix 2 and COM fabrics are available only in the removable cover version.