

Maki Sizes

Depth 90 cm Depth 35 3/8"

90	139 cm 54 6/8"	→ Fenix-NTM® → DEKTON®
	139/176/214 cm 54 6/8/69 2/8/84 2/8"	→ Fenix-NTM® → DEKTON®
	166 cm 65 3/8"	→ Fenix-NTM® → DEKTON®
	166/203/241/278 cm 65 3/8/79 7/8/94 7/8/109 4/8"	→ Fenix-NTM®
	166/203/241 cm 65 3/8/79 7/8/94 7/8"	→ DEKTON®
	189 cm 74 3/8"	→ Fenix-NTM® → DEKTON®
	189/226/263 cm 74 3/8/89/103 4/8" *	→ Fenix-NTM®
	189/226/263 cm 74 3/8/89/103 4/8"	→ DEKTON®
	209 cm 82 2/8"	→ Fenix-NTM®
	209/246/283 cm 82 2/8/96 7/8/111 3/8" *	→ Fenix-NTM®

Depth 90 cm Depth 35 3/8"

90	159 cm 62 5/8"	→ Teak
	159/199/239 cm 62 5/8/78 3/8/94 1/8"	→ Teak
	179 cm 70 4/8"	→ Teak
	179/219/259 cm 70 4/8/86 2/8/102"	→ Teak
	199 cm 78 3/8"	→ Teak
	199/239/279 cm 78 3/8/94 1/8/109 7/8"	→ Teak
	219 cm 86 2/8"	→ Teak
	219/259/299 cm 86 2/8/102/117 6/8"	→ Teak
	259 cm 102"	→ Teak
	298 cm 117 6/8"	→ Teak

Depth 100 cm Depth 39 3/8"

100	166 cm 65 3/8"	→ Fenix-NTM® → DEKTON®
	166/213/260 cm 65 3/8/83 7/8/102 3/8" *	→ Fenix-NTM®
	166/203/240 cm 65 3/8/79 7/8/94 4/8"	→ DEKTON®
	189 cm 74 3/8"	→ Fenix-NTM® → DEKTON®
	189/236/283 cm 74 3/8/92 7/8/111 3/8" *	→ Fenix-NTM®
	189/226/263 cm 74 3/8/89/103 4/8"	→ DEKTON®
	209 cm 82 2/8"	→ Fenix-NTM®
	209/256/303 cm 82 2/8/100 6/8/119 2/8" *	→ Fenix-NTM®
	229 cm 90 1/8"	→ DEKTON®
	269 cm 105 7/8"	→ DEKTON®

* = 3rd additional extension (on request)

Tops

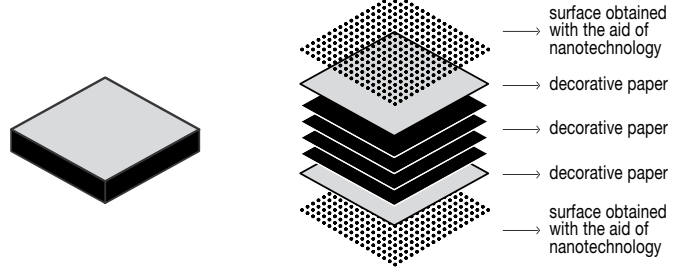
Depth 100 cm Depth 39 3/8"

100	100 cm 39 3/8"	→ Teak
	179 cm 70 4/8"	→ Teak
	179/219/259 cm 70 4/8/86 2/8/102"	→ Teak
	199 cm 78 3/8"	→ Teak
	199/239/279 cm 78 3/8/94 1/8/109 7/8"	→ Teak
	219 cm 86 2/8"	→ Teak
	219/259/299 cm 86 2/8/102/117 6/8"	→ Teak
	259 cm 102"	→ Teak

Depth 124 cm Depth 48 7/8"

124	219 cm 86 2/8"	→ Teak
	219/259/299 cm 86 2/8/102/117 6/8"	→ Teak
	259 cm 102"	→ Teak
	298 cm 117 6/8"	→ Teak

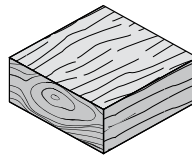
Fenix-NTM® black edge 10 mm thick



DEKTON® by Cosentino 8 mm thick



Teak Thick 20 mm



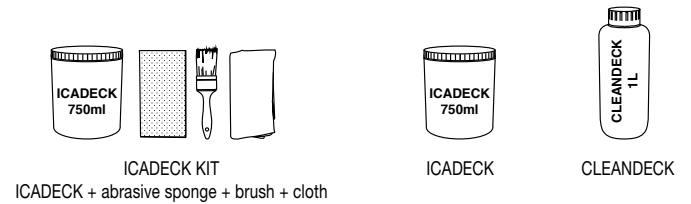
Over time, untreated teak will acquire a typical silvery colour characteristic of this wood finish when exposed to the open air. This aesthetic process does not affect the quality or the resistance of the material.

For regular cleaning operations, use a detergent for outdoor furniture made of wood, or simply use a soft brush and water.

ICADECK (water-based oil) can be applied to prevent oxidation of the surface of the new product.

To remove the grey patina caused by oxidation and restore the original colour of the teak, use **CLEANECK** (anti-grey detergent). Treatment with **CLEANECK** must be followed by washing and applying **ICADECK** to a dry surface.

Do not use a high-pressure cleaner, as it would damage the wood surface and fibres. To remove surface scratches, you can use sandpaper or a manual sander.



Code	Price in EURO	Packs	Vol.³	Kg
02KITOUT01 ICADECK KIT (water-based oil)		1	0,01	2
02KITOUT02 ICADECK (water-based oil)		1	0,01	1,5
02KITOUT03 CLEANDECK (anti-grey detergent)		1	0,01	1,5

Maki Fenix-NTM®

Extensible/Fixed - Depth 90 cm.

Leg finish:

White lacquered aluminium (similar to RAL 9016)

"Fenix-NTM® London grey" lacquered aluminium (similar to RAL Design0805005)

"Fenix-NTM® Bromo grey" lacquered aluminium (similar to RAL 7012)

Black lacquered aluminium (similar to RAL 9004)

Olive green lacquered aluminium (colour code "Olive green polyurethane PO08")

Finish of top/extensions:

Fenix-NTM® black edge (Kos white 0032, London grey 0718, Bromo grey 0724, Ingo black 0720)

→ For tables with codes marked with an asterisk (*), a third extension can be added to further increase the length.

→ Important: measurements or finishes marked with (!) require longer production times, about 6 weeks from the order date.

→ Tables that extend to more than 250 cm have a top that slightly bends, which complies with accepted quality standards.

→ Reinforced packaging, see inside of cover.

→ "Casper" protective cover, see page 74.

Extensible (►)

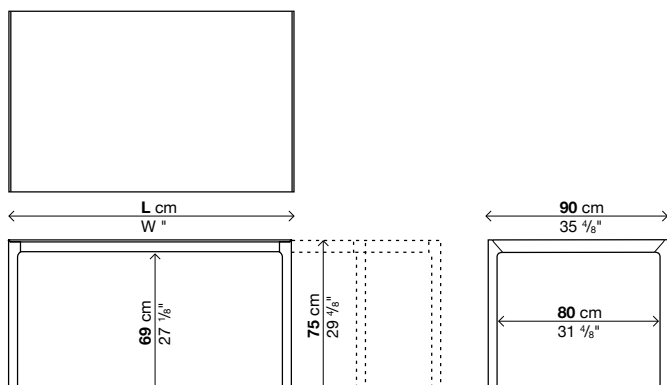
Code	Length (L)	Depth	Legs	Top	Price in EURO	Packs	Vol. ³	Kg
01MAK03	139-176-214	90	lacquered	Fenix black edge		3	0,41	79
01MAK04	166-203-241-278 <small>3rd standard extension</small>	90	lacquered	Fenix black edge		4	0,5	89
01MAK08*	189-226-263	90	lacquered	Fenix black edge		3	0,51	90
01MAK30*	209-246-283	90	lacquered	Fenix black edge (!)		3	0,55	96

(*) 3rd additional extension

Code	Length (L)	Extension	Price in EURO	Packs	Vol. ³	Kg
50SUS02A	37,5	Fenix black edge		1	0,025	6,5

Fixed (■)

Code	Length (L)	Depth	Legs	Top	Price in EURO	Packs	Vol. ³	Kg
01MAK03F	139	90	lacquered	Fenix black edge		1	0,36	54
01MAK04F	166	90	lacquered	Fenix black edge		1	0,42	60
01MAK53F	189	90	lacquered	Fenix black edge		1	0,46	65
01MAK30F	209	90	lacquered	Fenix black edge		1	0,5	70



Maki Fenix-NTM®

Extensible/Fixed - Depth 100 cm.

Leg finish:

White lacquered aluminium (similar to RAL 9016)

“Fenix-NTM® London grey” lacquered aluminium (similar to RAL Design0805005)

“Fenix-NTM® Bromo grey” lacquered aluminium (similar to RAL 7012)

Black lacquered aluminium (similar to RAL 9004)

Olive green lacquered aluminium (colour code “Olive green polyurethane PO08”)

Finish of top/extensions:

Fenix-NTM® black edge (Kos white 0032, London grey 0718, Bromo grey 0724, Ingo black 0720)

→ For tables with codes marked with an asterisk (*), a third extension can be added to further increase the length.

→ Tables that extend to more than 250 cm have a top that slightly bends, which complies with accepted quality standards.

→ Reinforced packaging, see inside of cover.

→ “Casper” protective cover, see page 74.

Extensible (►)

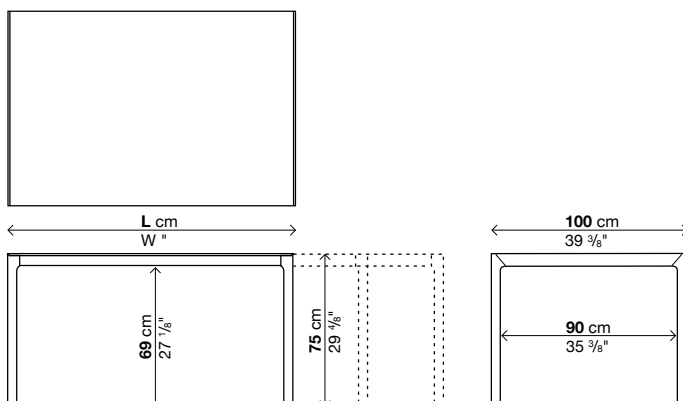
Code	Length (L)	Depth	Legs	Top	Price in EURO	Packs	Vol. ³	Kg
01MAK05*	166-213-260	100	lacquered	Fenix black edge		3	0,52	93
01MAK09*	189-236-283	100	lacquered	Fenix black edge		3	0,57	100
01MAK06*	209-256-303	100	lacquered	Fenix black edge		3	0,62	106

(*) 3rd additional extension

Code	Length (L)	Extension	Price in EURO	Packs	Vol. ³	Kg
50SUS06A	33	Fenix black edge		1	0,035	6

Fixed (II)

Code	Length (L)	Depth	Legs	Top	Price in EURO	Packs	Vol. ³	Kg
01MAK05F	166	100	lacquered	Fenix black edge		1	0,45	64
01MAK07F	189	100	lacquered	Fenix black edge		1	0,5	70
01MAK06F	209	100	lacquered	Fenix black edge		1	0,55	75



Maki DEKTON® by Cosentino

Extensible/Fixed - Depth 90/100 cm.

Leg finish:

White lacquered aluminium (similar to RAL 9016)

“Ventus grey” lacquered aluminium

Black lacquered aluminium (similar to RAL 9004)

Olive green lacquered aluminium (colour code “Olive green polyurethane PO08”)

Finish of top:

DEKTON® Zenith white

DEKTON® Ventus grey

DEKTON® Aura (digital marble)

Finish of extensions:

White lacquered aluminium (similar to RAL 9016)

“Ventus grey” lacquered aluminium

→ Important: measurements or finishes marked with **(I)** require longer production times, about 6 weeks from the order date.

→ Tables that extend to more than 250 cm have a top that slightly bends, which complies with accepted quality standards.

→ Reinforced packaging, see inside of cover.

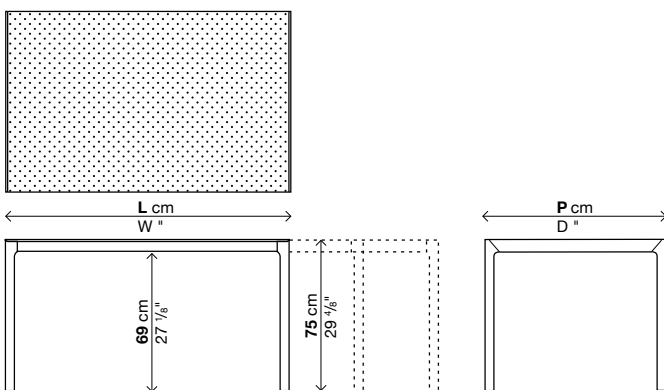
→ “Casper” protective cover, see page 74.

Extensible (►)

Code	Length (L)	Depth	Legs	Top	Price in EURO	Packs	Vol. ³	Kg
01MAK03	139-176-214	90	lacquered	DEKTON (I)		3	0,41	97
01MAK04	166-203-241	90	lacquered	DEKTON (I)		3	0,5	110
01MAK08	189-226-263	90	lacquered	DEKTON (I)		3	0,51	113
01MAK05	166-203-240	100	lacquered	DEKTON (I)		3	0,52	116
01MAK09	189-226-263	100	lacquered	DEKTON (I)		3	0,57	126

Fixed (II)

Code	Length (L)	Depth	Legs	Top	Price in EURO	Packs	Vol. ³	Kg
01MAK03F	139	90	lacquered	DEKTON (I)		1	0,36	68
01MAK04F	166	90	lacquered	DEKTON (I)		1	0,42	77
01MAK53F	189	90	lacquered	DEKTON (I)		1	0,46	84
01MAK05F	166	100	lacquered	DEKTON (I)		1	0,45	82
01MAK07F	189	100	lacquered	DEKTON (I)		1	0,5	91
01MAK08F	229	100	lacquered	DEKTON (I)		1	0,6	105
01MAK69F	269	100	lacquered	DEKTON (I)		1	0,69	123



HIGHLY UV RESISTANT



RESISTANT TO ABRASION



RESISTANT TO STAIN



MAXIMUM RESISTANCE TO FIRE AND HEAT



LOW WATER ABSORPTION



HIGH MECHANICAL RESISTANCE



COLOUR STABILITY



DIMENSIONAL STABILITY



FIREPROOF MATERIAL