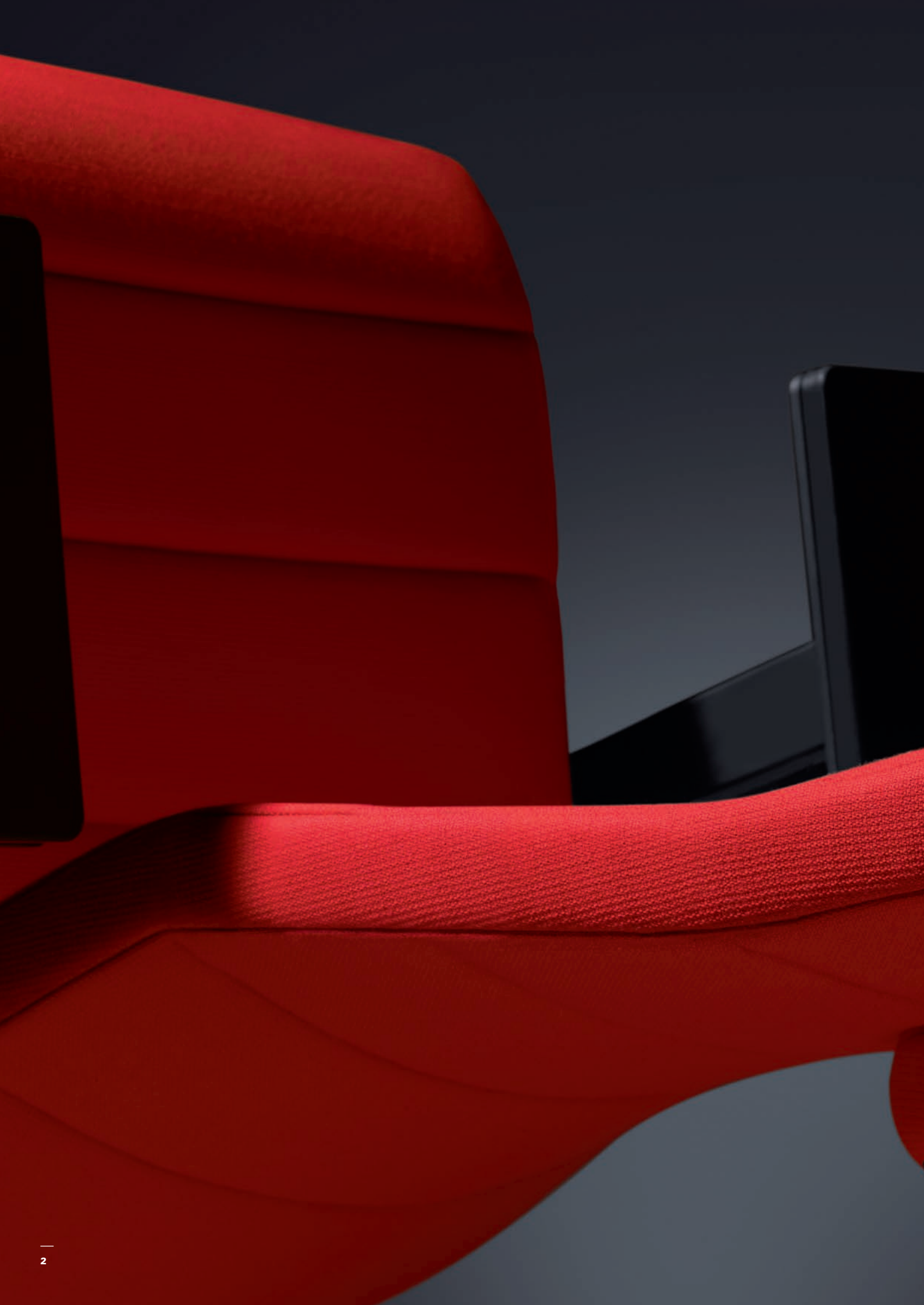


interstuhl

/ CHAMP







# CHAMP STRIKING, SLIM AND ELEGANT

Champ is the model found in office spaces with sophisticated furnishings; its quiet self-sufficiency makes it an influential presence. It won't tolerate an overload, but needs space to assist the smooth progress of offices and work. Champ is fitted with a new technological concept that provides an innovative seating solution and is instantly recognisable: a new lightness and distinctiveness accentuate its superb quality.

Champ swivel chairs are available in three different heights. The segments proportion the chair heights. The innovative Body-Float synchronous mechanism gives Champ a distinctive appearance. The revolutionary technology creates a feeling of gliding wave motion when you sit down and lean back.



1C62

Swivel chair,  
medium backrest,  
Body-Float synchronous  
mechanism,  
weight adjustment,  
Looparmrest optional



3C02

Swivel armchair, high backrest,  
Body-Float synchronous mechanism,  
weight adjustment,  
4D T-armrest optional



3C02

Swivel armchair,  
high backrest with headrest,  
Body-Float synchronous mechanism,  
weight adjustment,  
loop armrests optional



3C22

Champ as a conference chair and cantilever chair, also with backrests in two heights, rounds off the collection's concept for integrated furnishings. A distinct detail of the cantilever chair: the armrests are connected in a continuous line. The upholstery in red is one of many colours and fabric / leather collections available for Champ.



5C60

Cantilever frame low  
with arm pad,  
stackable





5C70

Cantilever frame high  
with arm pad,  
stackable



The first swivel chair with front cantilever seating edge: distinctive design.



The front cantilever seating edge makes it possible to find a comfortable adjustment of the seat inclination. The innovative suspension on the rear seating area means that the seating height no longer has to be manually adjusted, just like the height of the lumbar support when the incline is adjusted.



Body-Float synchronous mechanism: the body glides into a gentle rear flow movement. The new mechanism covers a wide weight spectrum from 45 – 140 Kg.



The swinging and dynamic form of the ring-shaped armrest supports the elegant character of the series.



4D T-armrests, adjustable in height, width and depth, rotatable or 2D T-armrests, adjustable in width and height.



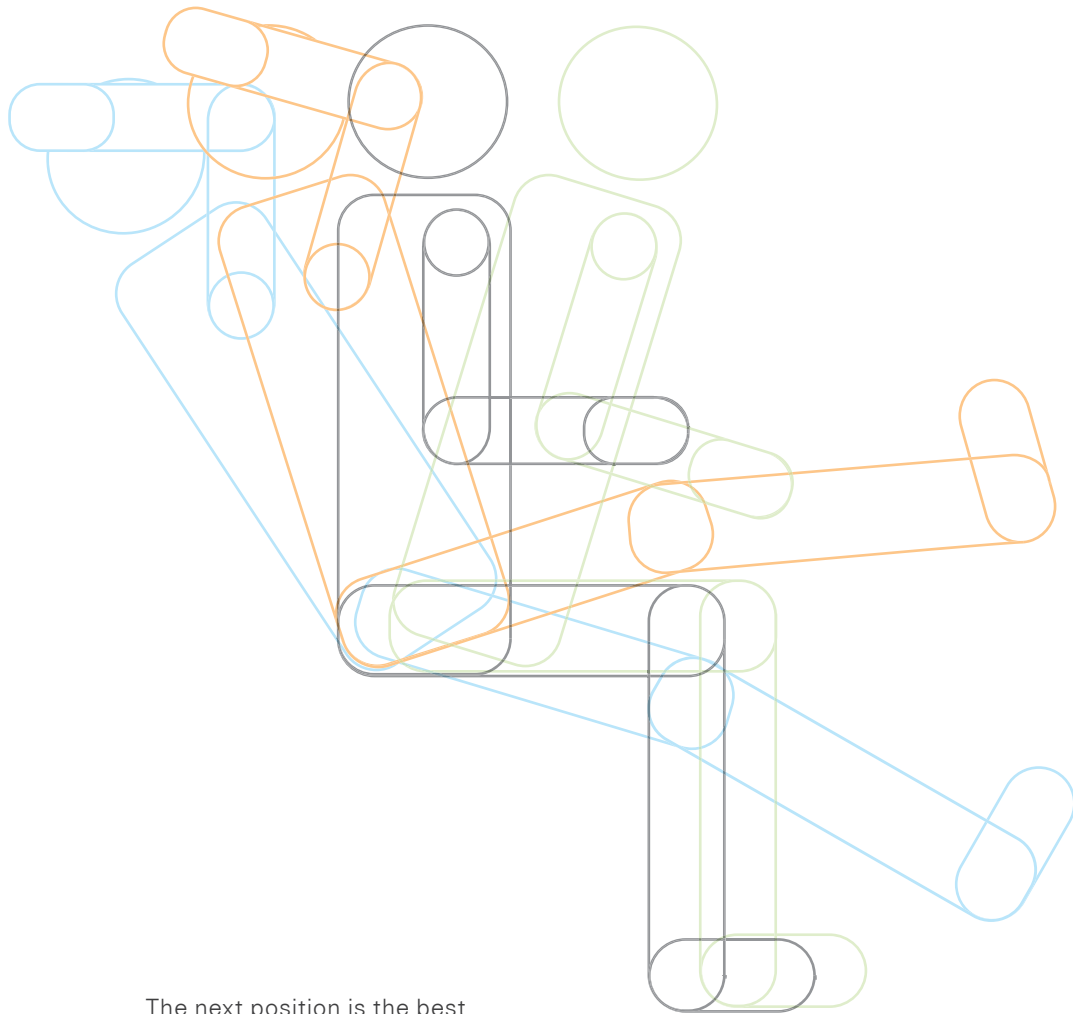
All control levers are comfortably positioned so that they can be intuitively reached. The hand-wheel provides fine adjustment of the individual Body-Float synchronous mechanism reset force.



Lumbar support with air-pressure technology.



The astiv seat depth adjustment effectively extends the seating area and the seating area for the thighs. The base of the backrest remains unaffected.



The next position is the best

## A LITTLE THEORY OF SEATING

Man was not born to sit. So one of the ways in which you can recognise a good chair is to check how freely you can move about on it. Technically, this is known as sitting dynamically. For this, your chair needs to be correctly adjusted. Body and chair can then act as one in every movement and every position.

It is easy enough to establish the correct basic configuration: when you sit relaxed and upright, your feet rest flat on the floor; your thighs and lower legs and your thighs and upper body create a right angle. If your chair has armrests, adjust

these so that your upper and lower arm create a right angle too. The settings for the ideal adjustment of your chair can change over the course of one day. Just take note of the way your body moves around. Maybe you prefer a different sitting position when you're typing than when you're working with the mouse. If you tend to bend your upper body forwards when you work, you should raise the chair higher than the basic position; but if you like leaning back to work, then you should lower it. Seating solutions by Interstuhl support a healthy working pos-

ture in so many different ways. A range of cleverly designed, carefully coordinated technologies work together to provide the best possible seating characteristics for every intended purpose. It is possible to differentiate between the technologies that extend the range of functions of the chair (functions), and those that allow you to adjust the sitting position to your own physical characteristics and personal preference (adjustment possibilities). Exactly which technical features you need depends on your specific requirements and where the chair is to be used.

---

**1** Body-Float synchronous mechanism



The body is perfectly supported in every position by the synchronous movement of seat and backrest; the push-effect is absent.

---

**2** Mechanical sprung column



This ensures that the spine, which is very sensitive to vertical jolts, is not subjected to excessive loads when sitting down, even at the lowest seat height.

---

**3** Weight adjustment



The individually adjustable counter-pressure of the backrest permits correct sitting for both light and heavy users.

---

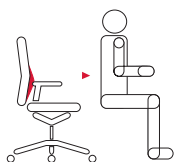
**4** Seat depth adjustment



Instead of just altering the distance between seat and backrest, active seat depth adjustment allows you to increase the actual contact area on which the thighs rest. This means, particularly for larger people, a better distribution of body weight on the thighs, giving a much more comfortable sitting experience.

---

**5** Adjustable lumbar support



The horizontally adjustable lumbar support adapts to the individual curve of the lumbar spine; this reduces the muscle strain.

---

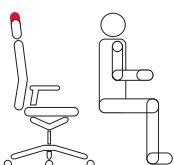
**6** Adjustable armrests



Height adjustment to relieve strain on the muscles of the neck. Width adjustment and swivelling for optimum angle of support, depth adjustment for optimum distance from the table.

---

**7** Headrest



The neck and shoulder muscles are relieved by the headrest when you lean back.

---



### 1C62

Swivel chair medium,  
synchronous  
mechanism,  
weight adjustment,  
armrests optional

Back height in cm (approx.)	48 - 54
Plastic colour black	•
Black polyamide base	•
Aluminium base black / brilliant silver / polished	◦ / ◦ / ◦
Tubular frame steel black / brilliant silver / chromed	–
Body-Float synchronous mechanism	•
Weight adjustment	•
Mechanical sprung column	•
Back height adjustment	•
Seat depth adjustment - Astiv	◦
Adjustable seat inclination	◦
Adjustable lumbar support (Air-Pressure)	◦
Headrest	–
Loop armrests / loop armrests with leather cover	◦ / ◦
2D T-armrests, adjustable in height and width	◦
4D T-armrests, adjustable in height, width and depth, rotatable	◦
Arm pad / arm pad with leather cover	–
Stackable	–
Double castors hard / soft	• / ◦
Glides hard / soft	◦ / ◦
Felt glides	–

• Standard ◦ Option – not available



# PRODUKT OVERVIEW DESIGN.



**3C02**

Swivel armchair high, synchronous mechanism, weight adjustment, armrests optional



**3C22**

Swivel armchair high with headrest, synchronous mechanism, weight adjustment, armrests optional



**5C60 (STACKABLE)**

Cantilever frame medium, arm pads, (or Fig. 5C65, not stackable)



**5C70 (STACKABLE)**

Cantilever frame medium, arm pads, (or Fig. 5C75, not stackable)

60 - 66

•  
•  
◦ / ◦ / ◦

–

•

•

•

•

◦

◦

◦

–

◦ / ◦

◦

◦

–

–

• / ◦

◦ / ◦

–

60 - 66

•  
•  
◦ / ◦ / ◦

–

•

•

•

•

◦

◦

◦

•

◦ / ◦

◦

◦

–

–

• / ◦

◦ / ◦

–

51

•  
–  
–

• / ◦ / ◦

–

–

–

–

–

–

–

–

–

–

–

• / ◦

5C60

–

–

◦

51

•  
–  
–

• / ◦ / ◦

–

–

–

–

–

–

–

–

–

–

–

• / ◦

5C70

–

–

◦

Especially in the group or opposite one another, you can see that the constructing segments, which proportion the chair heights, have the most subtle detail.



5C60



3C02



Produkt-Design: Andreas Krob,  
Joachim Brüske © interstuhl.

Andreas Krob is an industrial designer. B4K was founded with his wife Uta Krob in 2001. The office stands for sensitive design of demanding and innovative tasks from the design and architecture fields. The furniture speaks an individual language of form and each single piece is unique in its character. With Champ, an office swivel chair was created, which brings specific, technical innovation together with classic, long-lasting design into sophisticated rooms of communication.

The product design for Champ was realised in cooperation with Joachim Brüske. Joachim Brüske took charge of the technical management in developing the new mechanism.



reddot design award  
2009



3 year full warranty,  
5 year long-term  
warranty



Tested  
safety



Quality  
Office



Quality produced  
for the environment



Tested for  
contaminants



The  
Blue Angel



Bifma e3  
level platin



Ergonomics  
approved  
(Swivel chair)



BIFMA

