

FlexDesk 640



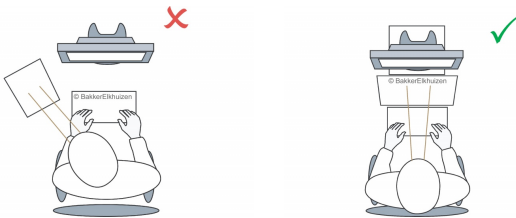
Multifunctional: document holder and writing slope, working simultaneously with documents and computer

High quality: satin work surface, easy gliding rails, cabin for pencils, rigid (5 mm thickness acrylic)

Creates an in-line workstation: document holder is placed between screen and keyboard, that prevents undue head and neck movements

Height adjustable (115 - 175 mm): good alignment to the screen

Handy: allows full-size keyboards to be stored, space under front side: 55 mm



Research

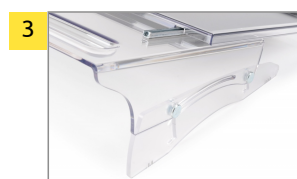
Most desktop users work with their computer and documents at the same time. Commonly these papers are on the left or the right of the computer user, whereby the neck strain increases. The "in-line" document holder increases the productivity, working simultaneously with the monitor and the document. The document holder enables the user to create extra workspace to organize documents, notes, mobile phone, PDA, post-it Notes just right in front of the user.

Specifications

Dimensions:	515 x 110 x 380 mm (W x H x D)
Weight:	2200 g
Product code:	BNEFDESK640



1. "in-line" working
2. ergonomic
3. making notice



Health & Safety Regulations

Council Directive 90/270/E the minimum safety and health requirements for work with display screen equipment. The document holder shall be stable and adjustable and shall be positioned so as to minimize the need for uncomfortable head and eye movements.