

# Duna 02 / Trestle Swivel

## Design by Lievore Altherr Molina, 2014

### Art. 4206: trestle swivel and polypropylene shell

Armchair with polished or powdercoated aluminium swivel trestle base. Polypropylene shell available in six colors.



### Dimensions\*



\* Files CAD 2D - 3D available for download at [www.arper.com](http://www.arper.com)

### Frame Base



LU1  
Aluminium  
finish steel



V12  
White  
lacquered  
Matt



V39  
Black  
lacquered  
Matt

### Shipment details

Art. 4206	kg	m <sup>3</sup>	lb	ft <sup>3</sup>
1 PCS = 2 boxes	14.58	0.367	32.1	12.960
4 PCS = 2 boxes	43.40	0.548	95.7	19.352

### Materials

#### Polypropylene



PP  
Polypropylene  
6 colors

# Duna 02 / Trestle Swivel

## Design by Lievore Altherr Molina, 2014

---

### Options and accessories



1

1 Set of glides

# Duna 02 / Trestle Swivel

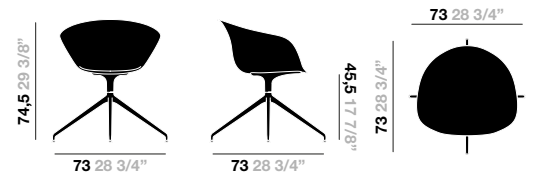
## Design by Lievore Altherr Molina, 2014

Art. 4226: trestle swivel and polypropylene shell with cushion

Armchair with polished or powdercoated aluminium swivel trestle base. Polypropylene shell available in six colors, with cushion in leather, faux leather, fabric or customer's own material applied on the seat surface.



Dimensions\*



\* Files CAD 2D - 3D available for download at [www.arper.com](http://www.arper.com)

### Frame Base



LU1  
Aluminium  
finish steel



V12  
White  
lacquered  
Matt



V39  
Black  
lacquered  
Matt

### Shipment details

Art. 4226	kg	m <sup>3</sup>	lb	ft <sup>3</sup>
1 PCS = 2 boxes	14.58	0.367	32.1	12.960
4 PCS = 2 boxes	43.40	0.548	95.7	19.352

### Materials

#### Polypropylene



PP  
Polypropylene  
6 colors

#### Carded In fabrics by **kvadrat** and No Stain



Topas 2



Hallingdal 65



Remix 2



Cava 3



Pro 2



Clara 2



Tempo



Divina MD



Scuba



No Stain



Divina 3



Divina  
Melange 2



Tonus 3



Field



Steelcut Trio 2



Sunniva



Steelcut 2



Pause 4



Canvas



Savanna

# Duna 02 / Trestle Swivel

## Design by Lievore Altherr Molina, 2014

---

Carded In Faux leather, Soft leather and Chrome Free leather by **elmo**.



PI  
Faux  
leather



PF  
Soft  
leather



ES  
Elmosoft®  
Leather

---

### Graded In Fabrics by

**kvadrat**

[www.kvadrat.dk](http://www.kvadrat.dk)

**camira**

[www.camirafabrics.com](http://www.camirafabrics.com)



[www.fidivi.com](http://www.fidivi.com)

**Gabriel**

[www.gabriel.dk](http://www.gabriel.dk)



[www.spradling.eu](http://www.spradling.eu)

**climatex**

[www.climatex.com](http://www.climatex.com)

**Serge Ferrari**

[www.en.sergeferrari.com](http://www.en.sergeferrari.com)



[www.winter-creation.com](http://www.winter-creation.com)

**DESIGN  
TEX**

[www.designtex.com](http://www.designtex.com)

**maharam**

[www.maharam.com](http://www.maharam.com)

Visit the company website [www.arper.com](http://www.arper.com) to view the available fabrics and swatches

---

### Options and accessories



1

1 Set of glides

# Duna 02 / Trestle Swivel

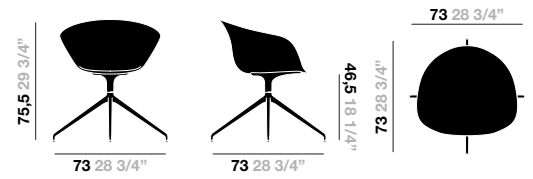
## Design by Lievore Altherr Molina, 2014

Art. 4216: trestle swivel and polypropylene shell with front-face upholstery

Armchair with polished or powdercoated aluminium swivel trestle base. Polypropylene shell available in six colors, with front upholstery in leather, faux leather, fabric or customer's own material.



### Dimensions\*



\* Files CAD 2D - 3D available for download at [www.arper.com](http://www.arper.com)

### Frame Base



LU1  
Aluminium  
finish steel



V12  
White  
lacquered  
Matt



V39  
Black  
lacquered  
Matt

### Shipment details

Art. 4216	kg	m <sup>3</sup>	lb	ft <sup>3</sup>
1 PCS = 2 boxes	14.58	0.367	32.1	12.960
4 PCS = 2 boxes	43.40	0.548	95.7	19.352

### Materials

#### Polypropylene



PP  
Polypropylene  
6 colors

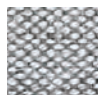
#### Carded In fabrics by **kvadrat** and No Stain



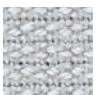
Topas 2



Hallingdal 65



Remix 2



Cava 3



Pro 2



Clara 2



Tempo



Divina MD



Scuba



No Stain



Divina 3



Divina  
Melange 2



Tonus 3



Field



Steelcut Trio 2



Sunniva



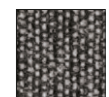
Steelcut 2



Pause 4



Canvas



Savanna

# Duna 02 / Trestle Swivel

## Design by Lievore Altherr Molina, 2014

---

Carded In Faux leather, Soft leather and Chrome Free leather by **elmo**.



PI  
Faux  
leather



PF  
Soft  
leather



ES  
Elmosoft®  
Leather

---

### Graded In Fabrics by

**kvadrat**

[www.kvadrat.dk](http://www.kvadrat.dk)

**camira**

[www.camirafabrics.com](http://www.camirafabrics.com)



[www.fidivi.com](http://www.fidivi.com)

**Gabriel**

[www.gabriel.dk](http://www.gabriel.dk)



[www.spradling.eu](http://www.spradling.eu)

**climatex**

[www.climatex.com](http://www.climatex.com)

**Serge Ferrari**

[www.en.sergeferrari.com](http://www.en.sergeferrari.com)



[www.winter-creation.com](http://www.winter-creation.com)

**DESIGN  
TEX**

[www.designtex.com](http://www.designtex.com)

**maharam**

[www.maharam.com](http://www.maharam.com)

Visit the company website [www.arper.com](http://www.arper.com) to view the available fabrics and swatches

---

### Options and accessories



1

1 Set of glides

# Duna 02 / Trestle Swivel

## Design by Lievore Altherr Molina, 2014

### Art. 4236: trestle swivel and fully upholstered shell

Armchair with polished or powdercoated aluminium swivel trestle base. Shell fully upholstered in leather, faux leather, fabric or customer's own material.



### Dimensions\*



\* Files CAD 2D - 3D available for download at [www.arper.com](http://www.arper.com)

### Frame Base



LU1  
Aluminium  
finish steel



V12  
White  
lacquered  
Matt



V39  
Black  
lacquered  
Matt

### Shipment details

Art. 4236	kg	m <sup>3</sup>	lb	ft <sup>3</sup>
1 PCS = 2 boxes	14.58	0.367	32.1	12.960
4 PCS = 2 boxes	43.40	0.548	95.7	19.352

### Materials

Carded In fabrics by **kvadrat** and No Stain



Topas 2



Hallingdal 65



Remix 2



Cava 3



Pro 2



Clara 2



Tempo



Divina MD



Scuba



No Stain



Divina 3



Divina  
Melange 2



Tonus 3



Field



Steelcut Trio 2



Sunniva



Steelcut 2



Pause 4



Canvas



Savanna

Carded In Faux leather, Soft leather and Chrome Free leather by **elmo**.



PI  
Faux  
leather



PF  
Soft  
leather



ES  
Elmosoft®  
Leather

# Duna 02 / Trestle Swivel

## Design by Lievore Altherr Molina, 2014

---

Graded In Fabrics by  
**kvadrat**

[www.kvadrat.dk](http://www.kvadrat.dk)

**camira**

[www.camirafabrics.com](http://www.camirafabrics.com)



[www.fidivi.com](http://www.fidivi.com)

**Gabriel**

[www.gabriel.dk](http://www.gabriel.dk)



[www.spradling.eu](http://www.spradling.eu)

 **climatex**®

[www.climatex.com](http://www.climatex.com)

**Serge Ferrari**

[www.en.sergeferrari.com](http://www.en.sergeferrari.com)



[www.winter-creation.com](http://www.winter-creation.com)

**DESIGN  
TEX**

[www.designtex.com](http://www.designtex.com)

**maharam**

[www.maharam.com](http://www.maharam.com)

Visit the company website [www.arper.com](http://www.arper.com) to view the available fabrics and swatches

---

### Options and accessories



1

1 Set of glides