

Duna / Sled

Design by Lievore Altherr Molina, 2000

Art. D021: sled base and polyethylene shell

Art. D019: sled base and upholstered shell

Chair with chromed steel sled base and polyethylene shell upholstered in leather, faux leather, fabric or customer's fabric. Glides for wooden floors available upon request.



Dimensions*



* Files CAD 2D - 3D available for download at www.arper.com

Base finishes



CRO
Chrome
finish
steel

Shipment details

Art. D021	kg	m ³	lb	ft ³
1 PCS = 2 boxes	12.04	0.358	26.544	12.643
4 PCS = 2 boxes	40.44	0.472	89.155	16.669
Art. D019	kg	m ³	lb	ft ³
1 PCS = 2 boxes	12.04	0.358	26.544	12.643
4 PCS = 2 boxes	40.44	0.472	89.155	16.669

Materials

Polyethylene

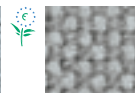


PE
Polyethylene
9 colors

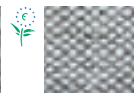
Fabric by kvadrat and No Stain



Topas 2
67 colors



Hallingdal 65
58 colors



Remix 2
49 colors



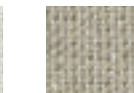
Cava 3
49 colors



Flora 2
33 colors



Pro 2
35 colors



Lazio 2
28 colors



Clara
28 colors



Tempo
22 colors



Divina MD
27 colors



Scuba
24 colors



No Stain
34 colors



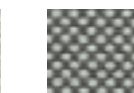
Divina 3
56 colors



Divina
Melange 2
24 colors



Tonus 3
64 colors



Field
24 colors



Steelcut
Trio 2
49 colors



Sunniva
12 colors



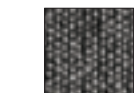
Steelcut 2
37 colors



Pause 4
43 colors



Canvas
28 colors



Savanna
13 colors

Duna / Sled

Design by Lievore Altherr Molina, 2000

Faux leather, Soft leather



PI
Faux
leather
52 colors



PF
Soft
leather
13 colors

Options and accessories



1 2 3 4

- 1 Polycarbonate glide with polyurethane insert
- 2 Polycarbonate glide with felt insert
- 3 Polyurethane cushion
- 4 Upholstered cushion

Fire retardant test

UK CONTRACT:
BS7176-07 Medium Hazard: Fabric (Flora 2, Pro 2). Elmosoft, Faux leather. BS7176-07 Low Hazard: Soft leather. Faux leather. Fabric (Divina 3, Divina Melange 2, Hallingdal 65, Tonus 3, Topas 2).

UK DOMESTIC:
BS5852-1 Sch.4-5 Part1: Faux leather. Soft leather, Elmosoft. Fabric (Flora 2, Divina 3, Divina Melange 2, Hallingdal 65, Tonus 3, Topas 2). BS5852-1 Sch. 4 Part1: Fabric (Pro 2).

USA Technical Bulletin 117: Fabric. Faux leather. Technical Bulletin (California): TB117

Resistance test

Art. D021

EN 1022/05
EN 1728/2000 - EN 15373:2007 6.2.1 3°
EN 1728/2000 - EN 15373:2007 6.2.2 3°
EN 1728/2000 - EN 15373:2007 6.7 3°

Art. D019

EN 1022/05
EN 1728/2000 - EN 15373:2007 6.2.1 3°
EN 1728/2000 - EN 15373:2007 6.2.2 3°
EN 1728/2000 - EN 15373:2007 6.7 3°

