

# Duna / 4 Ways swivel

## Design by Lievore Altherr Molina, 2000

Art. D017: 4 way swivel base and polyethylene shell  
 Art. D007: 4 way swivel base and upholstered shell

Chair with chromed steel swivel trestle base with polyethylene shell upholstered in leather, faux leather, fabric or customer's fabric.



### Dimensions\*



\* Files CAD 2D - 3D available for download at [www.arper.com](http://www.arper.com)

### Base finishes



CRO  
 Chrome  
 finish  
 steel

### Shipment details

Art. D017	kg	m <sup>3</sup>	lb	ft <sup>3</sup>
1 PCS = 2 boxes	16.74	0.356	36.828	12.572
4 PCS = 5 boxes	59.24	0.924	130.328	32.630
Art. D007	kg	m <sup>3</sup>	lb	ft <sup>3</sup>
1 PCS = 2 boxes	16.74	0.356	36.828	12.572
4 PCS = 5 boxes	59.24	0.924	130.328	32.630

### Materials

#### Polyethylene



PE  
 Polyethylene  
 9 colors

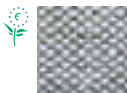
#### Fabric by kvadrat and No Stain



Topas 2  
 67 colors



Hallingdal 65  
 58 colors



Remix 2  
 49 colors



Cava 3  
 49 colors



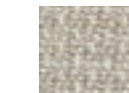
Flora 2  
 33 colors



Pro 2  
 35 colors



Lazio 2  
 28 colors



Clara  
 28 colors



Tempo  
 22 colors



Divina MD  
 27 colors



Scuba  
 24 colors



No Stain  
 34 colors



Divina 3  
 56 colors



Divina  
 Melange 2  
 24 colors



Tonus 3  
 64 colors



Field  
 24 colors



Steelcut  
 Trio 2  
 49 colors



Sunniva  
 12 colors



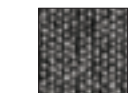
Steelcut 2  
 37 colors



Pause 4  
 43 colors



Canvas  
 28 colors



Savanna  
 13 colors

# Duna / 4 Ways swivel

## Design by Lievore Altherr Molina, 2000

Faux leather, Soft leather



PI  
Faux  
leather  
52 colors



PF  
Soft  
leather  
13 colors

### Options and accessories



1



2

- 1 Polyurethane cushion
- 2 Upholstered cushion

arper

### Fire retardant test

#### UK CONTRACT:

BS7176-07 Medium Hazard: Fabric (Flora 2, Pro, Tonus 3, Topas 2, Hallingdal 65). Elmosoft, Faux leather. BS7176-07 Low Hazard: Soft leather. Faux leather. Fabric (Divina 3, Divina Melange 2, Divina MD).

#### UK DOMESTIC:

BS5852-1 Sch.4-5 Part1: Faux leather. Soft leather, Elmosoft. Fabric (Flora 2, Divina 3, Divina Melange 2, Divina MD, Hallingdal 65, Tonus 3, Topas 2). BS5852-1 Sch. 4 Part1: Fabric (Pro 2).

USA Technical Bulletin 117: Fabric. Faux leather. Technical Bulletin (California): TB117

### Resistance test

Art. D017

EN 1728/2000 - EN 15373:2007 6.8 3°

Art. D007

EN 1728/2000 - EN 15373:2007 6.8 3°



F +39 0422 791800

T +39 0422 7918

www.arper.com

\* For more information on product's certification and environment documents visit [www.arper.com](http://www.arper.com) or contact us at [environment@arper.com](mailto:environment@arper.com)