

# Masai Chair / Trestle fixed

## Design by Lievore Altherr Molina, 2001

Art. 0411: trestle fixed base in polished or painted aluminum

Chair on shiny or painted aluminum pedestal base, mounted on self-braking castors. The polyethylene shell is padded and covered in full-grain leather, faux leather, fabric or customer's fabric.

Dimensions\*



\* Files CAD 2D - 3D available for download at [www.arper.com](http://www.arper.com)

### Base finishes



LU1  
Aluminum  
finish steel



V12 White  
lacquered  
Matt



V39 Black  
lacquered  
Matt

### Shipment details

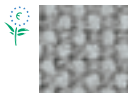
Art. 0411	kg	m <sup>3</sup>	lb	ft <sup>3</sup>
1 PCS = 1 box	17.2	0.349	37.84	12.335

### Materials

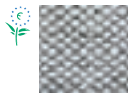
#### Fabric by kvadrat and No Stain



Topas 2  
67 colors



Hallingdal 65  
58 colors



Remix 2  
49 colors



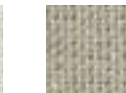
Cava 3  
49 colors



Flora 2  
33 colors



Pro 2  
35 colors



Lazio 2  
28 colors



Clara  
28 colors



Tempo  
22 colors



Divina MD  
27 colors



Scuba  
24 colors



No Stain  
34 colors



Divina 3  
56 colors



Divina  
Melange 2  
24 colors



Tonus 3  
64 colors



Field  
24 colors



Steelcut  
Trio 2  
49 colors



Sunniva  
12 colors



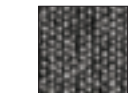
Steelcut 2  
37 colors



Pause 4  
43 colors



Canvas  
28 colors



Savanna  
13 colors

#### Faux leather, Soft leather



PI  
Faux  
leather  
52 colors



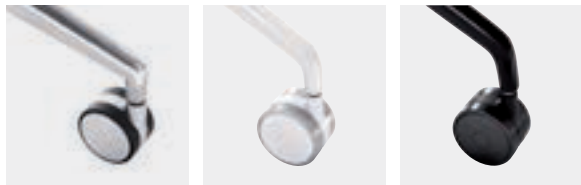
PF  
Soft  
leather  
13 colors

\* standard ochre stitching / other colors available upon request

# Masai Chair / Trestle fixed

## Design by Lievore Altherr Molina, 2001

---



1 2 3

- 1 Chrome castors
- 2 V12 white castors
- 3 V39 black castors

arper



---

### Fire retardant test

UK CONTRACT:  
BS7176-07 Medium Hazard: Fabric (Flora 2, Pro 2). BS7176-07 Low Hazard: Soft leather. Faux leather. Fabric (Divina 3, Divina Melange 2, Hallingdal, Tonus 3, Topas 2).

UK DOMESTIC:  
BS5852-1 Sch.4-5 Part1: Faux leather. Soft leather. Fabric (Flora 2, Divina 3, Divina Melange 2, Hallingdal, Tonus 3, Topas 2). BS5852-1 Sch. 4 Part1: Fabric (Pro 2).

USA Technical Bulletin 117: Fabric. Faux leather.



F +39 0422 791800

T +39 0422 7918

www.arper.com

\* For more information on product's certification and environment documents visit [www.arper.com](http://www.arper.com) or contact us at [environment@arper.com](mailto:environment@arper.com)