

Catifa 70 Lounge / Pedestal Design by Lievore Altherr Molina 2006

Art. 2031: square pedestal swivel base
Art. 2032: square pedestal base with return mechanism

Lounge chair with pedestal base in painted steel, available in the swivel version (Art. 2031) or with return mechanism (Art. 2032). The polyurethane shell is upholstered in leather, faux leather, fabric or customer's fabric.



Dimensions*



* Files CAD 2D - 3D available for download at www.arper.com

Base finishes



V12
White
lacquered
glossy



V34
Moka
lacquered
matt



V39
Grey
lacquered
semi-matt

Shipment details

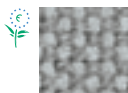
Art. 2031-2032	kg	m ³	lb	ft ³
1 PCS = 1 box	54.00	0.955	118.8	33.707

Materials

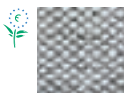
Fabric by kvadrat and No Stain



Topas 2
67 colors



Hallingdal 65
58 colors



Remix 2
49 colors



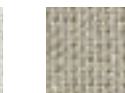
Cava 3
49 colors



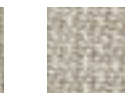
Flora 2
33 colors



Pro 2
35 colors



Lazio 2
28 colors



Clara
28 colors



Tempo
22 colors



Divina MD
27 colors



Scuba
24 colors



No Stain
34 colors



Divina 3
56 colors



Divina
Melange 2
24 colors



Tonus 3
64 colors



Field
24 colors



Steelcut
Trio 2
49 colors



Sunniva
12 colors



Steelcut 2
37 colors



Pause 4
43 colors



Canvas
28 colors



Savanna
13 colors

Faux leather, Soft leather and chrome free leather by elmo.



PI
Faux
leather
52 colors



PF
Soft
leather
13 colors



ES
Soft leather
Elmosoft®
60 colors

Catifa 70 Lounge / Pedestal

Design by Lievore Altherr Molina 2006



Fire retardant test

UK CONTRACT:
BS7176-07 Medium Hazard: Faux leather.
Elmosoft. Fabric (Flora 2, Pro 2, Divina 3, Divina
Melange 2, Hallingdal 65).
BS7176-07 Low Hazard: Soft leather. Fabric
(Tonus 3, Topas 2).
UK DOMESTIC:
BS5852-1:1979 Sch.4-5 Part1: Faux leather.
Soft leather. Elmosoft. Fabric (Flora 2, Divina 3,
Divina Melange 2, Hallingdal 65, Tonus 3, Topas
2). BS5852-1:1979 Sch. 4 Part1: Fabric (Pro 2).
USA Technical Bulletin 117: Fabric. Faux leather



arper

F +39 0422 791800

T +39 0422 7918

www.arper.com

* For more information on product's certification and environment documents visit www.arper.com or contact us at environment@arper.com