

Catifa 53 / Trestle swivel

Design by Lievore Altherr Molina, 2001

Art. 2054: Trestle swivel base with polypropylene shell

Art. 2054BV: Trestle swivel base with polypropylene shell and armrests

Chair with trestle swivel base in polished or painted aluminum. The shell is available in single-color and bi-color polypropylene (ColorBi® standard or inverted, or upholstered in two grades of hard leather. Available with steel armrests, also with polypropylene support.



clip.it.easy

Dimensions*



* Files CAD 2D - 3D available for download at www.arper.com

Shipment details

	kg	m ³	lb	ft ³
Art. 2054				
1 PCS = 2 boxes	10.70	0.278	23.540	9.817
4 PCS = 2 boxes	31.80	0.376	69.960	13.278
Art. 2054BV				
1 PCS = 3 boxes	13.80	0.307	30.360	10.841
4 PCS = 3 boxes	39.94	0.412	87.868	14.549

Base finishes



LU1
Aluminum
finish steel



V12 White
lacquered
Matt



V39 Black
lacquered
Matt

Materials

Polypropylene - Hard leather



PO
Polypropylene
one color
9 colors



PO
Polypropylene
two colors
9 colors



PO
Polypropylene
front-face
colour
9 colors



CU
Hard leather
grade 1
4 colors



CT
Hard leather
grade 2
13 colors

Catifa 53 / Trestle swivel

Design by Lievore Altherr Molina, 2001

Art. 2060: Trestle swivel base with upholstered shell

Art. 2060BV: Trestle swivel base with upholstered shell and armrests

Chair with trestle swivel base in polished or painted aluminum. The shell is upholstered in leather, faux leather, fabric or customer's fabric. Available with steel armrests, also upholstered.



clip.it.easy

Dimensions*



* Files CAD 2D - 3D available for download at www.arper.com

Shipment details

	kg	m ³	lb	ft ³
Art. 2060				
1 PCS = 2 boxes	11.70	0.282	25.740	9.958
4 PCS = 2 boxes	36.20	0.416	79.640	14.690
Art. 2060BV				
1 PCS = 3 boxes	14.80	0.311	32.560	10.982
4 PCS = 3 boxes	44.34	0.452	97.548	15.962

Base finishes



LU1
Aluminum
finish steel



V12 White
lacquered
Matt



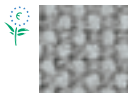
V39 Black
lacquered
Matt

Materials

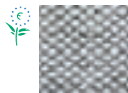
Fabric by kvadrat and No Stain



Topas 2
67 colors



Hallingdal 65
58 colors



Remix 2
49 colors



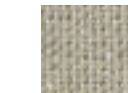
Cava 3
49 colors



Flora 2
33 colors



Pro 2
35 colors



Lazio 2
28 colors



Clara
28 colors



Tempo
22 colors



Divina MD
27 colors



Scuba
24 colors



No Stain
34 colors



Divina 3
56 colors



Divina
Melange 2
24 colors



Tonus 3
64 colors



Field
24 colors



Steelcut
Trio 2
49 colors



Sunniva
12 colors



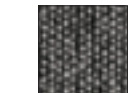
Steelcut 2
37 colors



Pause 4
43 colors



Canvas
28 colors



Savanna
13 colors

Faux leather, Soft leather and chrome free leather by elmo.



PI
Faux
leather
52 colors



PF
Soft
leather
13 colors



ES
Soft leather
Elmosoft®
60 colors

Catifa 53 / Trestle swivel

Design by Lievore Altherr Molina, 2001

Art. 2062: Trestle swivel base with wood shell

Art. 2062BV: Trestle swivel base with wood shell and armrests

Chair with trestle swivel base in polished or painted aluminum. The wood shell is available in three colors (natural oak, bleached oak or wengé). Available with steel armrests.



Dimensions*



* Files CAD 2D - 3D available for download at www.arper.com

Shipment details

	kg	m ³	lb	ft ³
Art. 2062				
1 PCS = 2 boxes	10.70	0.278	23.364	9.817
4 PCS = 2 boxes	31.20	0.376	68.640	13.419
Art. 2062BV				
1 PCS = 3 boxes	13.00	0.307	28.60	10.841
4 PCS = 3 boxes	39.34	0.416	86.548	14.960

Base finishes



LU1
Aluminum
finish steel



V12 White
lacquered
Matt



V39 Black
lacquered
Matt

Materials

Wood



L
Wood
3 colors

Catifa 53 / Trestle swivel

Design by Lievore Altherr Molina, 2001

Art. 2056: trestle swivel base with front-face upholstered shell
Art. 2056BV: trestle swivel base with front-face upholstered shell and armrests

Chair with trestle swivel base in polished or painted aluminum. The shell is available with front-face upholstery in leather, faux leather, fabric or customer's fabric. Available with steel armrests with, also upholstered.



clip.it.easy

Dimensions*



* Files CAD 2D - 3D available for download at www.arper.com

Shipment details

	kg	m ³	lb	ft ³
Art. 2056				
1 PCS = 2 boxes	12.60	0.282	27.720	9.945
4 PCS = 2 boxes	39.80	0.416	87.560	14.690
Art. 2056BV				
1 PCS = 3 boxes	14.98	0.311	32.956	10.170
4 PCS = 3 boxes	47.94	0.452	105.468	15.832

Base finishes



LU1
Aluminum
finish steel



V12 White
lacquered
Matt



V39 Black
lacquered
Matt

Materials

Polypropylene

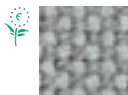


PO
Polypropylene
9 colors

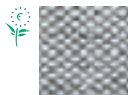
Fabric by kvadrat and No Stain



Topas 2
67 colors



Hallingdal 65
58 colors



Remix 2
49 colors



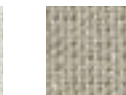
Cava 3
49 colors



Flora 2
33 colors



Pro 2
35 colors



Lazio 2
28 colors



Clara
28 colors



Tempo
22 colors



Divina MD
27 colors



Scuba
24 colors



No Stain
34 colors



Divina 3
56 colors



Divina
Melange 2
24 colors



Tonus 3
64 colors



Field
24 colors



Steelcut
Trio 2
49 colors



Sunniva
12 colors



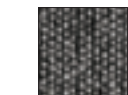
Steelcut 2
37 colors



Pause 4
43 colors



Canvas
28 colors



Savanna
13 colors

Catifa 53 / Trestle swivel

Design by Lievore Altherr Molina, 2001

Faux leather, Soft leather and chrome free leather by **elmo**.



PI
Faux
leather
52 colors



PF
Soft
leather
13 colors



ES
Soft leather
Elmosoft®
60 colors

Catifa 53 / Trestle swivel

Design by Lievore Altherr Molina, 2001

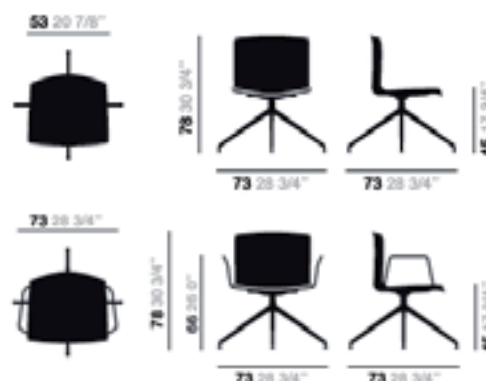
Art. 3101: Trestle swivel base with wood shell and cushion

Art. 3101BV: Trestle swivel base with wood shell, cushion and armrests

Chair with trestle swivel base in polished or painted aluminum. Double-curved wood shell is available in three finishes (natural oak, bleached oak, wengé) with cushion upholstery in leather, faux leather, fabric or customer's fabric applied to the seat surface. Available with armrest, also upholstered.



Dimensions*



* Files CAD 2D - 3D available for download at www.arper.com

Shipment details

	kg	m ³	lb	ft ³
Art. 3101				
1 PCS = 2 boxes	12.60	0.282	27.720	9.945
4 PCS = 2 boxes	39.80	0.416	87.560	14.690
Art. 3101BV				
1 PCS = 3 boxes	14.98	0.311	32.956	10.170
4 PCS = 3 boxes	47.94	0.452	105.468	15.832

Base finishes



LU1
Aluminum
finish steel



V12 White
lacquered
Matt



V39 Black
lacquered
Matt

Materials

Wood

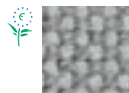


L
Wood
3 colors

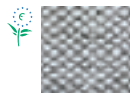
Fabric by kvadrat and No Stain



Topas 2
67 colors



Hallingdal 65
58 colors



Remix 2
49 colors



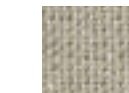
Cava 3
49 colors



Flora 2
33 colors



Pro 2
35 colors



Lazio 2
28 colors



Clara
28 colors



Tempo
22 colors



Divina MD
27 colors



Scuba
24 colors



No Stain
34 colors



Divina 3
56 colors



Divina
Melange 2
24 colors



Tonus 3
64 colors



Field
24 colors



Steelcut
Trio 2
49 colors



Sunniva
12 colors



Steelcut 2
37 colors



Pause 4
43 colors



Canvas
28 colors



Savanna
13 colors

Catifa 53 / Trestle swivel

Design by Lievore Altherr Molina, 2001

Faux leather, Soft leather and chrome free leather by **elmo**.



PI
Faux
leather
52 colors



PF
Soft
leather
13 colors



ES
Soft leather
Elmosoft®
60 colors

Catifa 53 / Trestle swivel

Design by Lievore Altherr Molina, 2001

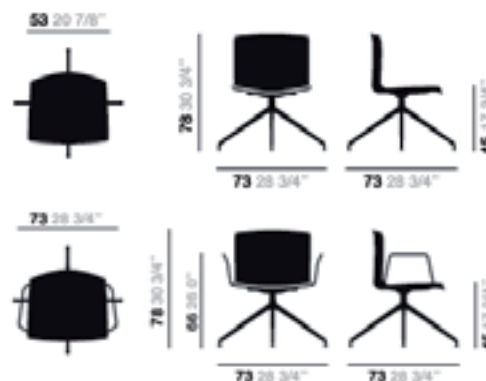
Art. 3125: Trestle swivel base and shell with upholstered cover
Art. 3125BV: Trestle swivel base and shell upholstered with cover and armrests

Chair with trestle swivel base in polished or painted aluminum.
 The white polypropylene shell is upholstered with removable non-washable cover in leather, faux leather, fabric or customer's fabric
 Available with steel armrests, also upholstered.



clip.it.easy

Dimensions*



* Files CAD 2D - 3D available for download at www.arper.com

Shipment details

	kg	m ³	lb	ft ³
Art. 3125				
1 PCS = 2 boxes	11.70	0.282	25.740	9.958
4 PCS = 2 boxes	36.20	0.416	79.640	14.690
Art. 3125BV				
1 PCS = 3 boxes	14.80	0.311	32.560	10.982
4 PCS = 3 boxes	44.34	0.452	97.548	15.962

Base finishes



LU1
Aluminum
finish steel



V12 White
lacquered
Matt



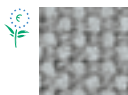
V39 Black
lacquered
Matt

Materials

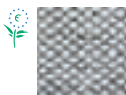
Fabric by kvadrat and No Stain



Topas 2
67 colors



Hallingdal 65
58 colors



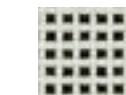
Remix 2
49 colors



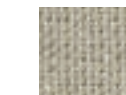
Cava 3
49 colors



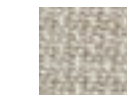
Flora 2
33 colors



Pro 2
35 colors



Lazio 2
28 colors



Clara
28 colors



Tempo
22 colors



Divina MD
27 colors



Scuba
24 colors



No Stain
34 colors



Divina 3
56 colors



Divina
Melange 2
24 colors



Tonus 3
64 colors



Field
24 colors



Steelcut
Trio 2
49 colors



Sunniva
12 colors



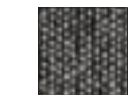
Steelcut 2
37 colors



Pause 4
43 colors



Canvas
28 colors



Savanna
13 colors

Faux leather, Soft leather and chrome free leather by elmo.



PI
Faux
leather
52 colors



PF
Soft
leather
13 colors



ES
Soft leather
Elmosoft®
60 colors

Catifa 53 / Trestle swivel

Design by Lievore Altherr Molina, 2001

Options and accessories



1 2 3 4 5



6 7 8 9



10 11 12 13

- | | | | |
|---|---|----|---------|
| 1 | Armrest | 10 | Cover 1 |
| 2 | Painted armrest | 11 | Cover 2 |
| 3 | Armrest with
Polypropylene one color | 12 | Cover 3 |
| 4 | Armrest upholstered | 13 | Cover 4 |
| 5 | Cushion | | |
| 6 | Set of glides | | |
| 7 | Chrome glide | | |
| 8 | White glide | | |
| 9 | Black glide | | |

Catifa 53 / Trestle swivel

Design by Lievore Altherr Molina, 2001

Fire Retardant Test

Resistance Test



POLYPROPYLENE FIRE RETARDANT:
 - colour PO00101
 - colours PO00102, PO00103, PO00106 qty. min. 300 pcs.

UK DOMESTIC:
 BS5852-1 Sch.5 Part1: Hard leather grade 1 and 2. BS5852/90 Sez.5 cigarette match: Polypropylene



Art. 2054 - 2054BV
 EN 1728/2000 - EN 15373:2007 6.2.1 3°
 EN 1728/2000 - EN 15373:2007 6.2.2 3°
 EN 1728/2000 - EN 15373:2007 6.7 3°
 EN 1728/2000 - EN 15373:2007 6.8 3°



UK CONTRACT:
 BS7176-07 Medium Hazard: Fabric (Flora 2, Pro, Tonus 3, Topas 2, Hallingdal 65). Elmosoft, Faux leather. BS7176-07 Low Hazard: Soft leather. Faux leather. Fabric (Divina 3, Divina Melange 2).
UK DOMESTIC:
 BS5852-1 Sch.4-5 Part1: Faux leather. Soft leather, Elmosoft. Fabric (Flora 2, Divina 3, Divina Melange 2, Hallingdal 65, Tonus 3, Topas 2). BS5852-1 Sch. 4 Part1: Fabric (Pro 2).
 USA Technical Bulletin 117: Fabric. Faux leather



Art. 2060 - 2060BV
 EN 1728/2000 - EN 15373:2007 6.2.1 3°
 EN 1728/2000 - EN 15373:2007 6.2.2 3°
 EN 1728/2000 - EN 15373:2007 6.7 3°
 EN 1728/2000 - EN 15373:2007 6.8 3°



UK DOMESTIC:
 BS5852/90 Sez.5 cigarette match



UK CONTRACT:
 BS7176-07 Medium Hazard: Fabric (Flora 2, Pro, Tonus 3, Topas 2, Hallingdal 65). Elmosoft, Faux leather. BS7176-07 Low Hazard: Soft leather. Faux leather. Fabric (Divina 3, Divina Melange 2).
UK DOMESTIC:
 BS5852-1 Sch.4-5 Part1: Faux leather. Soft leather, Elmosoft. Fabric (Flora 2, Divina 3, Divina Melange 2, Hallingdal 65, Tonus 3, Topas 2). BS5852-1 Sch. 4 Part1: Fabric (Pro 2).
 USA Technical Bulletin 117: Fabric. Faux leather



UK CONTRACT:
 BS7176-07 Medium Hazard: Fabric (Flora 2, Pro, Tonus 3, Topas 2, Hallingdal 65). Elmosoft, Faux leather. BS7176-07 Low Hazard: Soft leather. Faux leather. Fabric (Divina 3, Divina Melange 2).
UK DOMESTIC:
 BS5852-1 Sch.4-5 Part1: Faux leather. Soft leather, Elmosoft. Fabric (Flora 2, Divina 3, Divina Melange 2, Hallingdal 65, Tonus 3, Topas 2). BS5852-1 Sch. 4 Part1: Fabric (Pro 2).
 USA Technical Bulletin 117: Fabric. Faux leather



arper

F +39 0422 791800

T +39 0422 7918

www.arper.com

* For more information on product's certification and environment documents visit www.arper.com or contact us at environment@arper.com

Catifa 53 / Trestle swivel

Design by Lievore Altherr Molina, 2001



Fire Retardant Test

UK CONTRACT:
BS7176-07 Medium Hazard: Fabric (Flora 2, Pro, Tonus 3, Topas 2, Hallingdal 65). Elmosoft, Faux leather. BS7176-07 Low Hazard: Soft leather. Faux leather. Fabric (Divina 3, Divina Melange 2).
UK DOMESTIC:
BS5852-1 Sch.4-5 Part1: Faux leather. Soft leather, Elmosoft. Fabric (Flora 2, Divina 3, Divina Melange 2, Hallingdal 65, Tonus 3, Topas 2). BS5852-1 Sch. 4 Part1: Fabric (Pro 2).
USA Technical Bulletin 117: Fabric. Faux leather

Resistance Test

Art. 3135 - 2135BV
EN 1728/2000 - EN 15373:2007 6.2.1 3°
EN 1728/2000 - EN 15373:2007 6.2.2 3°
EN 1728/2000 - EN 15373:2007 6.7 3°
EN 1728/2000 - EN 15373:2007 6.8 3°



arper

F +39 0422 791800

T +39 0422 7918

www.arper.com

* For more information on product's certification and environment documents visit www.arper.com or contact us at environment@arper.com