

Catifa 53 / Trestle swivel

Design by Lievore Altherr Molina, 2001

Art. 0207: Trestle swivel base with polypropylene shell
 Art. 0207BV: Trestle swivel base with polypropylene shell and armrests

Chair with trestle swivel base, in chromed, or lacquered steel, with or without armrests. The shell is available in single-color and bi-color polypropylene (ColorBi®) standard or inverted, or upholstered in two grades of hard leather. Available with steel armrests, also with polypropylene support.



clip.it.easy

Dimensions*



* Files CAD 2D - 3D available for download at www.arper.com

Shipment details

Art. 0207	kg	m ³	lb	ft ³
1 PCS = 2 boxes	11.30	0.276	24.86	9.746
4 PCS = 2 boxes	34.20	0.368	75.24	12.995
Art. 0207BV				
1 PCS = 3 boxes	13.78	0.311	30.38	10.982
4 PCS = 3 boxes	42.92	0.412	94.62	14.549

Base finishes



CRO
 Chrome
 finish steel



V12 White
 lacquered
 Matt

Materials

Polypropylene - Hard leather



PO
 Polypropylene
 one color
 9 colors



PO
 Polypropylene
 two colors
 9 colors



PO
 Polypropylene
 front-face
 colour
 9 colors



CU
 Hard leather
 grade 1
 4 colors



CT
 Hard leather
 grade 2
 13 colors

Catifa 53 / Trestle swivel

Design by Lievore Altherr Molina, 2001

Art. 0209: Trestle swivel base with upholstered shell

Art. 0209BV: Trestle swivel base with upholstered shell and armrests

Chair with trestle swivel base, in chromed, or lacquered steel, with or without armrests. The shell is fully upholstered in leather, faux leather, fabric or customer's fabric; wood. Available with steel armrests, also upholstered.



clip.it.easy

Dimensions*



* Files CAD 2D - 3D available for download at www.arper.com

Shipment details

	kg	m ³	lb	ft ³
Art. 0209				
1 PCS = 2 boxes	12.30	0.280	27.06	9.888
4 PCS = 2 boxes	38.60	0.408	84.92	14.408
Art. 0209BV				
1 PCS = 3 boxes	11.83	0.113	26.08	3.990
4 PCS = 3 boxes	47.32	0.452	104.32	15.962

Base finishes



CRO
Chrome
finish steel



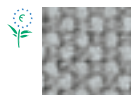
V12 White
lacquered
Matt

Materials

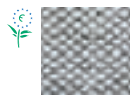
Fabric by kvadrat and No Stain



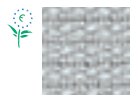
Topas 2
67 colors



Hallingdal 65
58 colors



Remix 2
49 colors



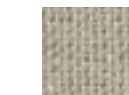
Cava 3
49 colors



Flora 2
33 colors



Pro 2
35 colors



Lazio 2
28 colors



Clara
28 colors



Tempo
22 colors



Divina MD
27 colors



Scuba
24 colors



No Stain
34 colors



Divina 3
56 colors



Divina
Melange 2
24 colors



Tonus 3
64 colors



Field
24 colors



Steelcut
Trio 2
49 colors



Sunniva
12 colors



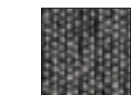
Steelcut 2
37 colors



Pause 4
43 colors



Canvas
28 colors



Savanna
13 colors

Faux leather, Soft leather and chrome free leather by elmo.



PI
Faux
leather
52 colors



PF
Soft
leather
13 colors



ES
Soft leather
Elmosoft®
60 colors

Catifa 53 / Trestle swivel

Design by Lievore Altherr Molina, 2001

Art. 0243: trestle swivel base with wood shell

Art. 0243BV: trestle swivel base with wood shell and armrests

Chair with trestle swivel base, in chromed, or lacquered steel. The wood shell is available in three color finishes (natural oak, bleached oak, wengé). Available with steel armrests.



clip.it.easy

Dimensions*



* Files CAD 2D - 3D available for download at www.arper.com

Shipment details

	kg	m ³	lb	ft ³
Art. 0243				
1 PCS = 2 boxes	11.32	0.282	24.904	9.958
4 PCS = 2 boxes	34.18	0.380	75.196	13.419
Art. 0243BV				
1 PCS = 3 boxes	13.70	0.311	30.14	10.982
4 PCS = 3 boxes	42.32	0.416	93.104	14.690

Base finishes



CRO
Chrome
finish steel



V12 White
lacquered
Matt

Materials

Wood



L
Wood
3 colors

Catifa 53 / Trestle swivel

Design by Lievore Altherr Molina, 2001

Art. 2042: Trestle swivel base with front-face upholstered shell
 Art. 2042BV: Trestle swivel base with front-face upholstered shell

Chair with trestle swivel base, in chromed, or lacquered steel, with or without armrests. The polypropylene shell is available with front-face upholstery in leather, faux leather, fabric or customer's fabric. Available with stell armrests, also upholstered.



clip.it.easy

Dimensions*



* Files CAD 2D - 3D available for download at www.arper.com

Shipment details

Art. 2042	kg	m ³	lb	ft ³
1 PCS = 2 boxes	13.10	0.280	28.820	9.888
4 PCS = 2 boxes	41.86	0.408	92.092	14.408
Art. 2042BV				
1 PCS = 3 boxes	15.58	0.315	34.276	11.124
4 PCS = 3 boxes	50.38	0.452	111.276	15.962

Base finishes



CRO
Chrome
finish steel



V12 White
lacquered
Matt

Materials

Polypropylene



PO
Polypropylene
9 colors

Fabric by kvadrat and No Stain



Topas 2
67 colors



Hallingdal 65
58 colors



Remix 2
49 colors



Cava 3
49 colors



Flora 2
33 colors



Pro 2
35 colors



Lazio 2
28 colors



Clara
28 colors



Tempo
22 colors



Divina MD
27 colors



Scuba
24 colors



No Stain
34 colors



Divina 3
56 colors



Divina
Melange 2
24 colors



Tonus 3
64 colors



Field
24 colors



Steelcut
Trio 2
49 colors



Sunniva
12 colors



Steelcut 2
37 colors



Pause 4
43 colors



Canvas
28 colors



Savanna
13 colors

Catifa 53 / Trestle swivel

Design by Lievore Altherr Molina, 2001

Faux leather, Soft leather and chrome free leather by **elmo**.



PI
Faux
leather
52 colors



PF
Soft
leather
13 colors



ES
Soft leather
Elmosoft®
60 colors

Catifa 53 / Trestle swivel Design by Lievore Altherr Molina, 2001

Art. 2097: Trestle swivel base with wood shell and seat surface upholstery

Art. 2097BV: Trestle swivel base with wood shell, seat surface upholstery and armrests

Chair with trestle swivel base, in chromed, or lacquered steel, with or without armrests. The shell is available in double-curved wood in three finishes with cushion upholstery in leather, faux leather, fabric or customer's fabric applied to the seat surface. Available with steel armrests, also upholstered



clip.it.easy

Dimensions*



* Files CAD 2D - 3D available for download at www.arper.com

Shipment details

Art. 2097	kg	m ³	lb	ft ³
1 PCS = 2 boxes	13.10	0.280	28.820	9.888
4 PCS = 2 boxes	41.86	0.408	92.092	14.408
Art. 2097BV				
1 PCS = 3 boxes	15.58	0.315	34.276	11.124
4 PCS = 3 boxes	50.38	0.452	111.276	15.962

Base finishes



CRO
Chrome
finish steel



V12 White
lacquered
Matt

Materials

Wood

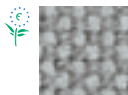


L
Wood
3 colors

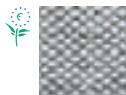
Fabric by kvadrat and No Stain



Topas 2
67 colors



Hallingdal 65
58 colors



Remix 2
49 colors



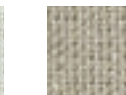
Cava 3
49 colors



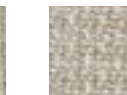
Flora 2
33 colors



Pro 2
35 colors



Lazio 2
28 colors



Clara
28 colors



Tempo
22 colors



Divina MD
27 colors



Scuba
24 colors



No Stain
34 colors



Divina 3
56 colors



Divina
Melange 2
24 colors



Tonus 3
64 colors



Field
24 colors



Steelcut
Trio 2
49 colors



Sunniva
12 colors



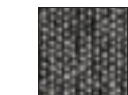
Steelcut 2
37 colors



Pause 4
43 colors



Canvas
28 colors



Savanna
13 colors

Catifa 53 / Trestle swivel

Design by Lievore Altherr Molina, 2001

Faux leather, Soft leather and chrome free leather by **elmo**.



PI
Faux
leather
52 colors



PF
Soft
leather
13 colors



ES
Soft leather
Elmosoft®
60 colors

Catifa 53 / Trestle swivel

Design by Lievore Altherr Molina, 2001

Art. 3123: Trestle swivel base with upholstered shell

Art. 3123BV: Trestle swivel base with upholstered shell and armrests

Chair with trestle swivel base, in chromed, or lacquered steel, with or without armrests. The white polypropylene shell is upholstered with a removable non-washable cover in leather, faux leather, fabric or customer's fabric. Available with steel armrests, also upholstered.



clip.it.easy

Dimensions*



* Files CAD 2D - 3D available for download at www.arper.com

Shipment details

Art. 3123	kg	m ³	lb	ft ³
1 PCS = 2 boxes	12.30	0.280	27.06	9.888
4 PCS = 2 boxes	38.60	0.408	84.92	14.408
Art. 3123BV				
1 PCS = 3 boxes	11.83	0.113	26.08	3.990
4 PCS = 3 boxes	47.32	0.452	104.32	15.962

Base finishes



CRO
Chrome
finish steel



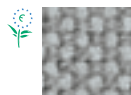
V12 White
lacquered
Matt

Materials

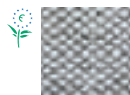
Fabric by kvadrat and No Stain



Topas 2
67 colors



Hallingdal 65
58 colors



Remix 2
49 colors



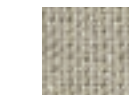
Cava 3
49 colors



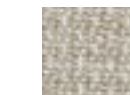
Flora 2
33 colors



Pro 2
35 colors



Lazio 2
28 colors



Clara
28 colors



Tempo
22 colors



Divina MD
27 colors



Scuba
24 colors



No Stain
34 colors



Divina 3
56 colors



Divina
Melange 2
24 colors



Tonus 3
64 colors



Field
24 colors



Steelcut
Trio 2
49 colors



Sunniva
12 colors



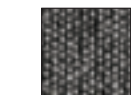
Steelcut 2
37 colors



Pause 4
43 colors



Canvas
28 colors



Savanna
13 colors

Faux leather, Soft leather and chrome free leather by elmo.



PI
Faux
leather
52 colors



PF
Soft
leather
13 colors



ES
Soft leather
Elmosoft®
60 colors

Catifa 53 / Trestle swivel

Design by Lievore Altherr Molina, 2001

Options and accessories



1

2

3

4

5



6

7

8



9

10

11

12

arper

F +39 0422 791800

T +39 0422 7918

www.arper.com

- 1 Armrest
- 2 Painted armrest
- 3 Armrest with Polypropylene one color
- 4 Armrest upholstered
- 5 Cushion

- 6 Set of glides
- 7 Chrome glide
- 8 V12 white glide
- 9 Cover 1
- 10 Cover 2
- 11 Cover 3
- 12 Cover 4

Catifa 53 / Trestle swivel

Design by Lievore Altherr Molina, 2001

Fire Retardant Test

Resistance Test



POLYPROPYLENE FIRE RETARDANT:
 - colour PO00101
 - colours PO00102, PO00103, PO00106 qty. min. 300 pcs.

Art. 0207 - 0207BV
 UNI EN 1728/00 6.2.1 1:5 5°
 UNI EN 1728/00 6.2.2 1:5 5°
 UNI EN 1728/00 6.7 1:5 5°

UK DOMESTIC:
 BS5852-1 Sch.5 Part1: Hard leather grade 1 and 2.
 BS5852/90 Sez.5 cigarette match: Polypropylene



epd-norge.no



UK CONTRACT:
 BS7176-07 Medium Hazard: Fabric (Flora 2, Pro, Tonus 3, Topas 2, Hallingdal 65). Elmosoft, Faux leather. BS7176-07 Low Hazard: Soft leather. Faux leather. Fabric (Divina 3, Divina Melange 2).
UK DOMESTIC:
 BS5852-1 Sch.4-5 Part1: Faux leather. Soft leather, Elmosoft. Fabric (Flora 2, Divina 3, Divina Melange 2, Hallingdal 65, Tonus 3, Topas 2). BS5852-1 Sch. 4 Part1: Fabric (Pro 2).
 USA Technical Bulletin 117: Fabric. Faux leather

Art. 0209 - 0209BV
 UNI EN 1728/00 6.2.1 1:5 5°
 UNI EN 1728/00 6.2.2 1:5 5°
 UNI EN 1728/00 6.7 1:5 5°



UK DOMESTIC:
 BS5852/90 Sez.5 cigarette match



UK CONTRACT:
 BS7176-07 Medium Hazard: Fabric (Flora 2, Pro, Tonus 3, Topas 2, Hallingdal 65). Elmosoft, Faux leather. BS7176-07 Low Hazard: Soft leather. Faux leather. Fabric (Divina 3, Divina Melange 2).
UK DOMESTIC:
 BS5852-1 Sch.4-5 Part1: Faux leather. Soft leather, Elmosoft. Fabric (Flora 2, Divina 3, Divina Melange 2, Hallingdal 65, Tonus 3, Topas 2). BS5852-1 Sch. 4 Part1: Fabric (Pro 2).
 USA Technical Bulletin 117: Fabric. Faux leather



UK CONTRACT:
 BS7176-07 Medium Hazard: Fabric (Flora 2, Pro, Tonus 3, Topas 2, Hallingdal 65). Elmosoft, Faux leather. BS7176-07 Low Hazard: Soft leather. Faux leather. Fabric (Divina 3, Divina Melange 2).
UK DOMESTIC:
 BS5852-1 Sch.4-5 Part1: Faux leather. Soft leather, Elmosoft. Fabric (Flora 2, Divina 3, Divina Melange 2, Hallingdal 65, Tonus 3, Topas 2). BS5852-1 Sch. 4 Part1: Fabric (Pro 2).
 USA Technical Bulletin 117: Fabric. Faux leather



arper

F +39 0422 791800

T +39 0422 7918

www.arper.com

* For more information on product's certification and environment documents visit www.arper.com or contact us at environment@arper.com

Catifa 53 / Trestle swivel

Design by Lievore Altherr Molina, 2001



Fire Retardant Test

UK CONTRACT:
BS7176-07 Medium Hazard: Fabric (Flora 2, Pro, Tonus 3, Topas 2, Hallingdal 65). Elmosoft, Faux leather. BS7176-07 Low Hazard: Soft leather. Faux leather. Fabric (Divina 3, Divina Melange 2).
UK DOMESTIC:
BS5852-1 Sch.4-5 Part1: Faux leather. Soft leather, Elmosoft. Fabric (Flora 2, Divina 3, Divina Melange 2, Hallingdal 65, Tonus 3, Topas 2). BS5852-1 Sch. 4 Part1: Fabric (Pro 2).
USA Technical Bulletin 117: Fabric. Faux leather

Resistance Test

Art. 3123 - 3123BV
UNI EN 1728/00 6.2.1 1:5 5°
UNI EN 1728/00 6.2.2 1:5 5°
UNI EN 1728/00 6.7 1:5 5°



arper

F +39 0422 791800

T +39 0422 7918

www.arper.com

* For more information on product's certification and environment documents visit www.arper.com or contact us at environment@arper.com