

# Catifa 53 / Sled

## Design by Lievore Altherr Molina, 2001

Art. 2074: sled base with polypropylene shell

Art. 2074BV: sled base with polypropylene shell and armrests

Chair with sled base in chromed steel, with or without armrests. The shell is available in single-color and bi-color polypropylene (ColorBi®), standard or inverted, upholstered in two grades of hard leather. Glides for wooden floors are available upon request without surcharge. Available with steel armrests, also with polypropylene support.



√clip.it.easy®

### Dimensions\*



\* Files CAD 2D - 3D available for download at [www.arper.com](http://www.arper.com)

### Shipment details

	kg	m <sup>3</sup>	lb	ft <sup>3</sup>
Art. 2074				
1 PCS = 2 boxes	9.50	0.297	20.09	10.488
4 PCS = 2 boxes	26.54	0.380	58.388	12.995
Art. 2074BV				
1 PCS = 3 boxes	9.50	0.297	20.09	10.488
4 PCS = 3 boxes	26.54	0.380	58.888	12.995

### Base finishes



CRO  
Chrome  
finish steel

### Stacking Options

Art. 2074 with stacking pad  
PP: up to 10 pcs. - CT and CU: max 5 pcs.  
PP: up to 20 pcs. - CT and CU: max 5 pcs.

### Materials

#### Polypropylene - Hard leather



PO  
Polypropylene  
one color  
9 colors



PO  
Polypropylene  
two colors  
9 colors



PO  
Polypropylene  
front-face  
colour  
9 colors



CU  
Hard leather  
grade 1  
4 colors



CT  
Hard leather  
grade 2  
13 colors

# Catifa 53 / Sled

## Design by Lievore Altherr Molina, 2001

Art. 2075: sled base with upholstered shell

Art. 2075BV: sled base with upholstered shell and armrests

Chair with sled base in chromed steel, with or without armrests. The shell is fully upholstered in leather, faux leather, fabric or customer's fabric. Glides for wooden floors are available upon request without surcharge. Available with steel armrests, also upholstered.



*clip.it.easy*

### Dimensions\*



\* Files CAD 2D - 3D available for download at [www.arper.com](http://www.arper.com)

### Shipment details

Art. 2075	kg	m <sup>3</sup>	lb	ft <sup>3</sup>
1 PCS = 2 boxes	12.30	0.335	27.06	11.830
4 PCS = 2 boxes	41.30	0.472	90.86	16.668
Art. 2075BV				
1 PCS = 3 boxes	12.30	0.335	27.06	11.830
4 PCS = 3 boxes	41.30	0.472	90.86	16.668

### Base finishes



CRO  
Chrome  
finish steel

### Stacking Options

Art. 2075 with stacking pad

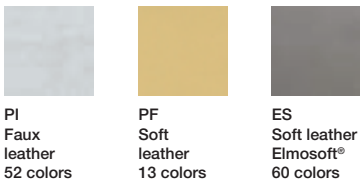
FABRIC: up to 8 pcs. - LEATHER: max 5 pcs.

### Materials

#### Fabric by kvadrat and No Stain



#### Faux leather, Soft leather and chrome free leather by elmo.



# Catifa 53 / Sled

## Design by Lievore Altherr Molina, 2001

Art. 2077: Sled base chair with wood shell

Art. 2077BV: Sled base chair with wood shell and armrests

Chair with sled base in chromed steel. The wood shell is available in three color finishes (natural oak, bleached oak, wengé). Glides for wooden floors are available upon request without surcharge. Available with steel armrests.



clip.it.easy®

### Dimensions\*



\* Files CAD 2D - 3D available for download at [www.arper.com](http://www.arper.com)

### Shipment details

Art. 2077	kg	m <sup>3</sup>	lb	ft <sup>3</sup>
1 PCS = 2 boxes	11.20	0.331	24.684	11.689
4 PCS = 2 boxes	36.30	0.436	79.860	15.397
Art. 2077BV				
1 PCS = 3 boxes	11.20	0.331	24.684	11.689
4 PCS = 3 boxes	36.30	0.436	79.860	15.397

### Base finishes



CRO  
Chrome  
finish steel

### Materials

#### Wood



L  
Wood  
3 colors

### Stacking Options

Art. 2077 with stacking glide  
Up to 10 pcs.

# Catifa 53 / Sled

## Design by Lievore Altherr Molina, 2001

Art. 2076: sled base with front-face upholstered shell  
 Art. 2076BV: sled base with front-face upholstered and armrests

Chair with sled base in chromed steel. The polypropylene shell is available with front-face upholstery in leather, faux leather, fabric or customer's fabric. Glides for wooden floors are available upon request without surcharge. Available with steel armrests, also upholstered.



*clip.it.easy*

### Dimensions\*



\* Files CAD 2D - 3D available for download at [www.arper.com](http://www.arper.com)

### Shipment details

	kg	m <sup>3</sup>	lb	ft <sup>3</sup>
Art. 2076				
1 PCS = 2 boxes	13.10	0.335	28.82	11.830
4 PCS = 2 boxes	44.56	0.472	98.03	16.668
Art. 2076BV				
1 PCS = 3 boxes	13.10	0.335	28.82	11.830
4 PCS = 3 boxes	44.56	0.472	98.03	16.668

### Base finishes



CRO  
 Chrome  
 finish steel

### Stacking Options

Art. 2076 with stacking pad  
 FABRIC: up to 8 pcs. - LEATHER: max 5 pcs.

### Materials

#### Polypropylene



PO  
 Polypropylene  
 9 colors

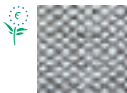
#### Fabric by kvadrat and No Stain



Topas 2  
 67 colors



Hallingdal 65  
 58 colors



Remix 2  
 49 colors



Cava 3  
 49 colors



Flora 2  
 33 colors



Pro 2  
 35 colors



Lazio 2  
 28 colors



Clara  
 28 colors



Tempo  
 22 colors



Divina MD  
 27 colors



Scuba  
 24 colors



No Stain  
 34 colors



Divina 3  
 56 colors



Divina  
 Melange 2  
 24 colors



Tonus 3  
 64 colors



Field  
 24 colors



Steelcut  
 Trio 2  
 49 colors



Sunniva  
 12 colors



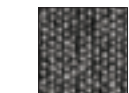
Steelcut 2  
 37 colors



Pause 4  
 43 colors



Canvas  
 28 colors



Savanna  
 13 colors

# Catifa 53 / Sled

## Design by Lievore Altherr Molina, 2001

---

Faux leather, Soft leather and chrome free leather by **elmo**.



PI  
Faux  
leather  
52 colors



PF  
Soft  
leather  
13 colors



ES  
Soft leather  
Elmosoft®  
60 colors

# Catifa 53 / Sled

## Design by Lievore Altherr Molina, 2001

Art. 2078: sled base with wood shell and front-face upholstery  
 Art. 2078BV: sled base with wood shell, front-face upholstery and armrests

Chair with sled base in chromed steel. The double-curved wood shell is available in three finishes with front-face upholstery in leather, faux leather, fabric or customer's fabric. Glides for wooden floors are available upon request without surcharge. Available with armrests, also upholstered



clip.it.easy®

### Dimensions\*



\* Files CAD 2D - 3D available for download at [www.arper.com](http://www.arper.com)

### Shipment details

	kg	m <sup>3</sup>	lb	ft <sup>3</sup>
Art. 2078				
1 PCS = 2 boxes	13.10	0.335	28.82	11.830
4 PCS = 2 boxes	44.56	0.472	98.03	16.668
Art. 2078BV				
1 PCS = 3 boxes	13.10	0.335	28.82	11.830
4 PCS = 3 boxes	44.56	0.472	98.03	16.668

### Base finishes



CRO  
 Chrome  
 finish steel

### Stacking Options

Art. 2078 with stacking pad  
 FABRIC: up to 8 pcs. - LEATHER: max 5 pcs.

### Materials

#### Wood



L  
 Wood  
 3 colors

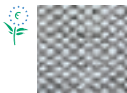
#### Fabric by kvadrat and No Stain



Topas 2  
 67 colors



Hallingdal 65  
 58 colors



Remix 2  
 49 colors



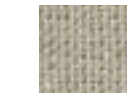
Cava 3  
 49 colors



Flora 2  
 33 colors



Pro 2  
 35 colors



Lazio 2  
 28 colors



Clara  
 28 colors



Tempo  
 22 colors



Divina MD  
 27 colors



Scuba  
 24 colors



No Stain  
 34 colors



Divina 3  
 56 colors



Divina Melange 2  
 24 colors



Tonus 3  
 64 colors



Field  
 24 colors



Steelcut Trio 2  
 49 colors



Sunniva  
 12 colors



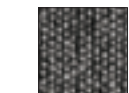
Steelcut 2  
 37 colors



Pause 4  
 43 colors



Canvas  
 28 colors



Savanna  
 13 colors

# Catifa 53 / Sled

## Design by Lievore Altherr Molina, 2001

---

Faux leather, Soft leather and chrome free leather by **elmo**.



PI  
Faux  
leather  
52 colors



PF  
Soft  
leather  
13 colors



ES  
Soft leather  
Elmosoft®  
60 colors

# Catifa 53 / Sled

## Design by Lievore Altherr Molina, 2001

**Art. 3120:** sled base and shell with upholstered cover  
**Art. 3120BV:** sled base and shell with upholstered cover and armrests

Chair with sled base in chromed steel, with or without armrests. The shell is fully upholstered in leather, faux leather, fabric or customer's fabric. Glides for wooden floors are available upon request without surcharge. Available with steel armrests, also upholstered.



*clip.it.easy*

### Dimensions\*



\* Files CAD 2D - 3D available for download at [www.arper.com](http://www.arper.com)

### Shipment details

	kg	m <sup>3</sup>	lb	ft <sup>3</sup>
Art. 3120				
1 PCS = 2 boxes	12.30	0.335	27.06	11.830
4 PCS = 2 boxes	41.30	0.472	90.86	16.668
Art. 3120BV				
1 PCS = 3 boxes	12.30	0.335	27.06	11.830
4 PCS = 3 boxes	41.30	0.472	90.86	16.668

### Base finishes



CRO  
 Chrome  
 finish steel

### Stacking Options

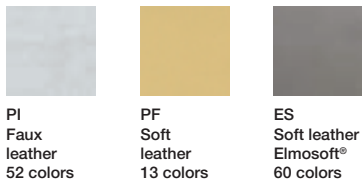
Art. 3120 with stacking pad  
 FABRIC: up to 8 pcs. - LEATHER: max 5 pcs.

### Materials

#### Fabric by kvadrat and No Stain



#### Faux leather, Soft leather and chrome free leather by elmo.

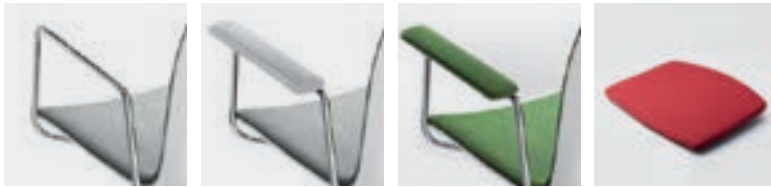




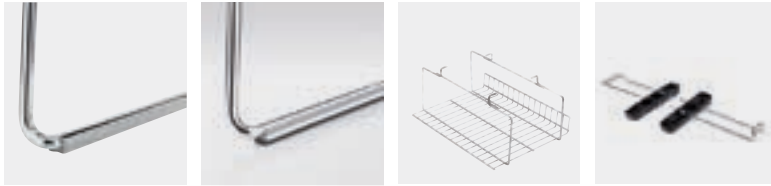
# Catifa 53 / Sled

Design by Lievore Altherr Molina, 2001

## Options and accessories



1 2 3 4



5 6 7 8



9 10 11 12 13



14 15 16 17

- |   |  |    |                                      |
|---|--|----|--------------------------------------|
| 1 | Armrest                                      | 9  | Staking glide                        |
| 2 | Armrest with Polypropylene one color         | 10 | Trolley                              |
| 3 | Armrest upholstered                          | 11 | Stackable                            |
| 4 | Cushion                                      | 12 | Stacking protection pad with link    |
| 5 | Polypropylene glide with polyurethane insert | 13 | Stacking protection pad without link |
| 6 | Polyurethane glide with felt insert          | 14 | Cover 1                              |
| 7 | Basket                                       | 15 | Cover 2                              |
| 8 | Link   | 16 | Cover 3                              |
|   |  | 17 | Cover 4                              |

# Catifa 53 / Sled

## Design by Lievore Altherr Molina, 2001

### Fire Retardant Test

### Resistance Test



**POLYPROPYLENE FIRE RETARDANT:**  
 - colour PO00101  
 - colours PO00102, PO00103, PO00106 qty. min. 300 pcs.

**UK DOMESTIC:**  
 BS5852-1 Sch.5 Part1: Hard leather grade 1 and 2. BS5852/90 Sez.5 cigarette match: Polypropylene

Art. 2074

EN 1022  
 EN 15373 6.2.1 3°  
 EN 15373 6.2.2 3°  
 EN 15373 6.7 3°  
 EN 15373 6.8 3°  
 EN 15373 6.12 3°

Art. 2079

EN 15373 6.2.1 3°  
 EN 15373 6.2.2 3°  
 EN 15373 6.7 3°  
 EN 15373 6.8 3°  
 EN 15373 6.12 3°



**UK CONTRACT:**  
 BS7176-07 Medium Hazard: Fabric (Flora 2, Pro, Tonus 3, Topas 2, Hallingdal 65). Elmosoft, Faux leather. BS7176-07 Low Hazard: Soft leather. Faux leather. Fabric ( Divina 3, Divina Melange 2).

**UK DOMESTIC:**  
 BS5852-1 Sch.4-5 Part1: Faux leather. Soft leather, Elmosoft. Fabric (Flora 2, Divina 3, Divina Melange 2, Hallingdal 65, Tonus 3, Topas 2). BS5852-1 Sch. 4 Part1: Fabric (Pro 2).  
**USA Technical Bulletin 117:** Fabric. Faux leather

Art. 2075

EN 1022  
 EN 15373 6.2.1 3°  
 EN 15373 6.2.2 3°  
 EN 15373 6.7 3°  
 EN 15373 6.8 3°  
 EN 15373 6.12 3°

Art. 2080

EN 15373 6.2.1 3°  
 EN 15373 6.2.2 3°  
 EN 15373 6.7 3°  
 EN 15373 6.8 3°  
 EN 15373 6.12 3°



**UK DOMESTIC:**  
 BS5852/06 Clause 12 cigarette match

Art. 2077 and 2077BV

EN 15373 6.2.1 3°  
 EN 15373 6.2.2 3°  
 EN 15373 6.7 3°  
 EN 15373 6.8 3°  
 EN 15373 6.12 2°  
 EN 15373 6.13 2°  
 EN 15373 6.15 3°  
 EN 15373 6.16 3°



**UK CONTRACT:**  
 BS7176-07 Medium Hazard: Fabric (Flora 2, Pro, Tonus 3, Topas 2, Hallingdal 65). Elmosoft, Faux leather. BS7176-07 Low Hazard: Soft leather. Faux leather. Fabric ( Divina 3, Divina Melange 2).

**UK DOMESTIC:**  
 BS5852-1 Sch.4-5 Part1: Faux leather. Soft leather, Elmosoft. Fabric (Flora 2, Divina 3, Divina Melange 2, Hallingdal 65, Tonus 3, Topas 2). BS5852-1 Sch. 4 Part1: Fabric (Pro 2).  
**USA Technical Bulletin 117:** Fabric. Faux leather

Art. 2076 and 2076BV

EN 15373 6.12 2°  
 EN 15373 6.13 2°



**UK CONTRACT:**  
 BS7176-07 Medium Hazard: Fabric (Flora 2, Pro, Tonus 3, Topas 2, Hallingdal 65). Elmosoft, Faux leather. BS7176-07 Low Hazard: Soft leather. Faux leather. Fabric ( Divina 3, Divina Melange 2).

**UK DOMESTIC:**  
 BS5852-1 Sch.4-5 Part1: Faux leather. Soft leather, Elmosoft. Fabric (Flora 2, Divina 3, Divina Melange 2, Hallingdal 65, Tonus 3, Topas 2). BS5852-1 Sch. 4 Part1: Fabric (Pro 2).  
**USA Technical Bulletin 117:** Fabric. Faux leather

Art. 2078 and 2078BV

EN 15373 6.12 2°  
 EN 15373 6.13 2°



arper

F +39 0422 791800

T +39 0422 7918

www.arper.com

\* For more information on product's certification and environment documents visit [www.arper.com](http://www.arper.com) or contact us at [environment@arper.com](mailto:environment@arper.com)

# Catifa 53 / Sled

## Design by Lievore Altherr Molina, 2001



### Fire Retardant Test

UK CONTRACT:  
BS7176-07 Medium Hazard: Fabric (Flora 2, Pro, Tonus 3, Topas 2, Hallingdal 65). Elmosoft, Faux leather. BS7176-07 Low Hazard: Soft leather. Faux leather. Fabric ( Divina 3, Divina Melange 2).

UK DOMESTIC:  
BS5852-1 Sch.4-5 Part1: Faux leather. Soft leather, Elmosoft. Fabric (Flora 2, Divina 3, Divina Melange 2, Hallingdal 65, Tonus 3, Topas 2). BS5852-1 Sch. 4 Part1: Fabric (Pro 2).  
USA Technical Bulletin 117: Fabric. Faux leather

### Resistance Test

Art.3120

EN 1022  
EN 15373 6.2.1 3°  
EN 15373 6.2.2 3°  
EN 15373 6.7 3°  
EN 15373 6.8 3°  
EN 15373 6.12 3°



arper

F +39 0422 791800

T +39 0422 7918

www.arper.com

\* For more information on product's certification and environment documents visit [www.arper.com](http://www.arper.com) or contact us at [environment@arper.com](mailto:environment@arper.com)