

Catifa 53 / 4 Wood legs

Design by Lievore Altherr Molina, 2010

Art. 2084: Wood leg base with polypropylene shell

Chair with four leg solid oak base (natural oak, bleached oak, wengé and stained teak) The shell is available in single-color and bi-color polypropylene (ColorBi®), standard or inverted, or upholstered in two grades of hard leather. Glides are suitable for various surfaces.



√clip.it.easy®

Dimensions*



* Files CAD 2D - 3D available for download at www.arper.com

Shipment details

Art. 2084	kg	m ³	lb	ft ³
1 PCS = 2 boxes	9.5	0.297	20.9	10.488
4 PCS = 2 boxes	26.54	0.368	58.388	12.995

Base finishes



IM - L20
veneered
beached oak



IM - L22
veneered
natural oak



IM - L21
veneered
wenge



IM - L23
Teak effect

Materials

Polypropylene - Hard leather



PO
Polypropylene
one color
9 colors



PO
Polypropylene
two colors
9 colors



PO
Polypropylene
front-face
colour
9 colors



CU
Hard leather
grade 1
4 colors



CT
Hard leather
grade 2
13 colors

Catifa 53 / 4 Wood legs

Design by Lievore Altherr Molina, 2010

Art. 2085: 4 Wood leg base with upholstered shell

Chair with four leg solid oak base (natural oak, bleached oak, wengé and stained teak) The shell is fully upholstered in leather, faux leather, fabric or customer's fabric. Glides are suitable for various surfaces.



√clip.it.easy®

Dimensions*



* Files CAD 2D - 3D available for download at www.arper.com

Shipment details

Art. 2085	kg	m ³	lb	ft ³
1 PCS = 2 boxes	10.5	0.301	23.10	10.629
4 PCS = 2 boxes	30.94	0.408	68.068	14.408

Base finishes



IM - L20
veneered
beached oak



IM - L22
veneered
natural oak



IM - L21
veneered
wenge



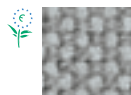
IM - L23
Teak effect

Materials

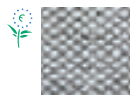
Fabric by kvadrat and No Stain



Topas 2
67 colors



Hallingdal 65
58 colors



Remix 2
49 colors



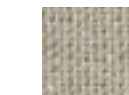
Cava 3
49 colors



Flora 2
33 colors



Pro 2
35 colors



Lazio 2
28 colors



Clara
28 colors



Tempo
22 colors



Divina MD
27 colors



Scuba
24 colors



No Stain
34 colors



Divina 3
56 colors



Divina
Melange 2
24 colors



Tonus 3
64 colors



Field
24 colors



Steelcut
Trio 2
49 colors



Sunniva
12 colors



Steelcut 2
37 colors



Pause 4
43 colors



Canvas
28 colors



Savanna
13 colors

Faux leather, Soft leather and chrome free leather by elmo.



PI
Faux
leather
52 colors



PF
Soft
leather
13 colors



ES
Soft leather
Elmosoft®
60 colors

Catifa 53 / 4 Wood legs

Design by Lievore Altherr Molina, 2010

Art. 2087: 4 wood leg base with wood shell

Chair with four leg solid oak base (natural oak, bleached oak, wengé) and wood shell available in three finishes (natural oak, bleached oak, wengé). Glides are suitable for various surfaces.



Dimensions*



* Files CAD 2D - 3D available for download at www.arper.com

Shipment details

Art. 2087	kg	m ³	lb	ft ³
1 PCS = 2 boxes	9.5	0.297	20.72	10.488
4 PCS = 2 boxes	26	0.372	57.068	13.137

arper



L
Wood
3 colors

Materials

Wood



L
Wood
3 colors

F +39 0422 791800

T +39 0422 7918

www.arper.com

Catifa 53 / 4 Wood legs

Design by Lievore Altherr Molina, 2010

Art. 2086: 4 wood leg base with front-face upholstered shell

Chair with four leg solid oak base (natural oak, bleached oak, wengé and stained teak) The polypropylene shell is available with front-face upholstery in leather, faux leather or fabric. Glides are suitable for various surfaces.



clip.it.easy®

Dimensions*



* Files CAD 2D - 3D available for download at www.arper.com

Shipment details

Art. 2086	kg	m ³	lb	ft ³
1 PCS = 2 boxes	11.30	0.301	24.86	10.629
4 PCS = 2 boxes	34.20	0.408	75.24	14.408

Base finishes



IM - L20
veneered
beached oak



IM - L22
veneered
natural oak



IM - L21
veneered
wenge



IM - L23
Teak effect

Materials

Polypropylene

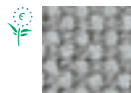


PO
Polypropylene
9 colors

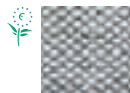
Fabric by kvadrat and No Stain



Topas 2
67 colors



Hallingdal 65
58 colors



Remix 2
49 colors



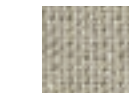
Cava 3
49 colors



Flora 2
33 colors



Pro 2
35 colors



Lazio 2
28 colors



Clara
28 colors



Tempo
22 colors



Divina MD
27 colors



Scuba
24 colors



No Stain
34 colors



Divina 3
56 colors



Divina
Melange 2
24 colors



Tonus 3
64 colors



Field
24 colors



Steelcut
Trio 2
49 colors



Sunniva
12 colors



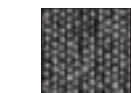
Steelcut 2
37 colors



Pause 4
43 colors



Canvas
28 colors



Savanna
13 colors

Catifa 53 / 4 Wood legs

Design by Lievore Altherr Molina, 2010

Faux leather, Soft leather and chrome free leather by **elmo**.



PI
Faux
leather
52 colors



PF
Soft
leather
13 colors



ES
Soft leather
Elmosoft®
60 colors

Catifa 53 / 4 Wood legs

Design by Lievore Altherr Molina, 2010

Art. 2088: 4 wood leg base with wood shell and front-face upholstery

Chair with four leg solid oak base (natural oak, bleached oak, wengé)
The double-curved wood shell is available in three finishes (natural oak, bleached oak, wengé) with cushion upholstery in leather, faux leather, fabric or customer's fabric applied to the seat surface. Glides are suitable for various surfaces.



Dimensions*



* Files CAD 2D - 3D available for download at www.arper.com

Shipment details

Art. 2088	kg	m ³	lb	ft ³
1 PCS = 2 boxes	11.20	0.301	24.86	10.629
4 PCS = 2 boxes	34.20	0.408	75.24	14.408

Base finishes



L
Wood
3 colors

Materials

Wood

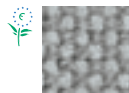


L
Wood
3 colors

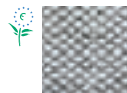
Fabric by kvadrat and No Stain



Topas 2
67 colors



Hallingdal 65
58 colors



Remix 2
49 colors



Cava 3
49 colors



Flora 2
33 colors



Pro 2
35 colors



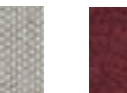
Lazio 2
28 colors



Clara
28 colors



Tempo
22 colors



Divina MD
27 colors



Scuba
24 colors



No Stain
34 colors



Divina 3
56 colors



Divina Melange 2
24 colors



Tonus 3
64 colors



Field
24 colors



Steelcut Trio 2
49 colors



Sunniva
12 colors



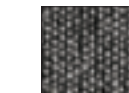
Steelcut 2
37 colors



Pause 4
43 colors



Canvas
28 colors



Savanna
13 colors

Catifa 53 / 4 Wood legs

Design by Lievore Altherr Molina, 2010

Faux leather, Soft leather and chrome free leather by **elmo**.



PI
Faux
leather
52 colors



PF
Soft
leather
13 colors



ES
Soft leather
Elmosoft®
60 colors

arper

F +39 0422 791800

T +39 0422 7918

www.arper.com

Catifa 53 / 4 Wood legs

Design by Lievore Altherr Molina, 2010

Art. 3118: 4 Wood leg base and shell with upholstered cover

Chair with four leg solid oak base (natural oak, bleached oak, wengé and stained teak) The white polypropylene shell is upholstered with a removable non-washable cover in leather, faux leather, fabric or customer's fabric. Glides are suitable for various surfaces.



√clip.it.easy®

Dimensions*



* Files CAD 2D - 3D available for download at www.arper.com

Shipment details

Art. 3118	kg	m ³	lb	ft ³
1 PCS = 2 boxes	10.5	0.301	23.10	10.629
4 PCS = 2 boxes	30.94	0.408	68.068	14.408

Base finishes



IM - L20
veneered
beached oak



IM - L22
veneered
natural oak



IM - L21
veneered
wenge



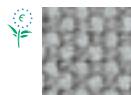
IM - L23
Teak effect

Materials

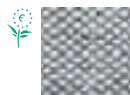
Fabric by kvadrat and No Stain



Topas 2
67 colors



Hallingdal 65
58 colors



Remix 2
49 colors



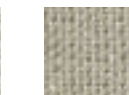
Cava 3
49 colors



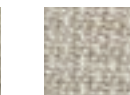
Flora 2
33 colors



Pro 2
35 colors



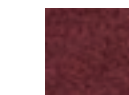
Lazio 2
28 colors



Clara
28 colors



Tempo
22 colors



Divina MD
27 colors



Scuba
24 colors



No Stain
34 colors



Divina 3
56 colors



Divina
Melange 2
24 colors



Tonus 3
64 colors



Field
24 colors



Steelcut
Trio 2
49 colors



Sunniva
12 colors



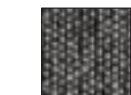
Steelcut 2
37 colors



Pause 4
43 colors



Canvas
28 colors



Savanna
13 colors

Faux leather, Soft leather and chrome free leather by elmo.



PI
Faux
leather
52 colors



PF
Soft
leather
13 colors



ES
Soft leather
Elmosoft®
60 colors

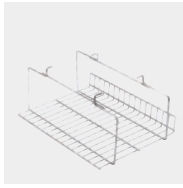
Catifa 53 / 4 Wood legs

Design by Lievore Altherr Molina, 2010

Options and accessories



1



2



3



4



5



6



7

- 1 Cushion
- 2 Basket
- 3 Link
- 4 Cover 1
- 5 Cover 2
- 6 Cover 3
- 7 Cover 4

arper

F +39 0422 791800

T +39 0422 7918

www.arper.com

Catifa 53 / 4 Wood legs

Design by Lievore Altherr Molina, 2010



Fire Retardant Test

POLYPROPYLENE FIRE RETARDANT:
 - colour PO00101
 - colours PO00102, PO00103, PO00106 qty. min. 300 pcs.

UK DOMESTIC:
 BS5852-1 Sch.5 Part1: Hard leather grade 1.
 Hard leather grade 2.
 BS5852/90 Sez.5 cigarette match:
 Polypropylene.



Resistance Test

Art. 2084

EN 1022
 EN 15373 6.2.1 3°
 EN 15373 6.2.2 3°
 EN 15373 6.7 3°
 EN 15373 6.8 3°
 EN 15373 6.12 2°
 EN 15373 6.13 2°
 EN 15373 6.15 3°
 EN 15373 6.16 3°



UK CONTRACT:
 BS7176-07 Medium Hazard: Fabric (Flora 2, Pro, Tonus 3, Topas 2, Hallingdal 65). Elmosoft, Faux leather. BS7176-07 Low Hazard: Soft leather. Faux leather. Fabric (Divina 3, Divina Melange 2).
UK DOMESTIC:
 BS5852-1 Sch.4-5 Part1: Faux leather. Soft leather, Elmosoft. Fabric (Flora 2, Divina 3, Divina Melange 2, Hallingdal 65, Tonus 3, Topas 2). BS5852-1 Sch. 4 Part1: Fabric (Pro 2).
 USA Technical Bulletin 117: Fabric. Faux leather



Art. 2085

EN 1022
 EN 15373 6.2.1 3°
 EN 15373 6.2.2 3°
 EN 15373 6.7 3°
 EN 15373 6.8 3°
 EN 15373 6.12 2°
 EN 15373 6.13 2°
 EN 15373 6.15 3°
 EN 15373 6.16 3°



UK DOMESTIC:
 BS5852/06 Clause 12 cigarette match



UK CONTRACT:
 BS7176-07 Medium Hazard: Fabric (Flora 2, Pro, Tonus 3, Topas 2, Hallingdal 65). Elmosoft, Faux leather. BS7176-07 Low Hazard: Soft leather. Faux leather. Fabric (Divina 3, Divina Melange 2).
UK DOMESTIC:
 BS5852-1 Sch.4-5 Part1: Faux leather. Soft leather, Elmosoft. Fabric (Flora 2, Divina 3, Divina Melange 2, Hallingdal 65, Tonus 3, Topas 2). BS5852-1 Sch. 4 Part1: Fabric (Pro 2).
 USA Technical Bulletin 117: Fabric. Faux leather



UK CONTRACT:
 BS7176-07 Medium Hazard: Fabric (Flora 2, Pro, Tonus 3, Topas 2, Hallingdal 65). Elmosoft, Faux leather. BS7176-07 Low Hazard: Soft leather. Faux leather. Fabric (Divina 3, Divina Melange 2).
UK DOMESTIC:
 BS5852-1 Sch.4-5 Part1: Faux leather. Soft leather, Elmosoft. Fabric (Flora 2, Divina 3, Divina Melange 2, Hallingdal 65, Tonus 3, Topas 2). BS5852-1 Sch. 4 Part1: Fabric (Pro 2).
 USA Technical Bulletin 117: Fabric. Faux leather



arper

F +39 0422 791800

T +39 0422 7918

www.arper.com

* For more information on product's certification and environment documents visit www.arper.com or contact us at environment@arper.com

Catifa 53 / 4 Wood legs

Design by Lievore Altherr Molina, 2010



Fire Retardant Test

UK CONTRACT:
BS7176-07 Medium Hazard: Fabric (Flora 2, Pro, Tonus 3, Topas 2, Hallingdal 65). Elmosoft, Faux leather. BS7176-07 Low Hazard: Soft leather. Faux leather. Fabric (Divina 3, Divina Melange 2).
UK DOMESTIC:
BS5852-1 Sch.4-5 Part1: Faux leather. Soft leather, Elmosoft. Fabric (Flora 2, Divina 3, Divina Melange 2, Hallingdal 65, Tonus 3, Topas 2). BS5852-1 Sch. 4 Part1: Fabric (Pro 2).
USA Technical Bulletin 117: Fabric. Faux leather

Resistance Test

Art. 3118
EN 1022
EN 15373 6.2.1 3°
EN 15373 6.2.2 3°
EN 15373 6.7 3°
EN 15373 6.8 3°
EN 15373 6.12 2°
EN 15373 6.13 2°
EN 15373 6.15 3°
EN 15373 6.16 3°



arper

F +39 0422 791800

T +39 0422 7918

www.arper.com

* For more information on product's certification and environment documents visit www.arper.com or contact us at environment@arper.com