

# Duna 02 Lounge / 4 Legs

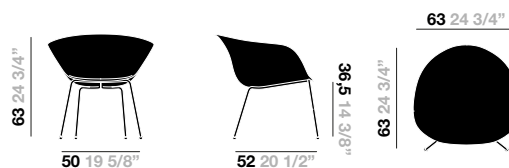
## Design by Lievore Altherr Molina, 2014

**Art. 4202: lounge chair with 4 leg base and polypropylene shell**

Lounge chair with chromed steel 4-leg base. Polypropylene shell available in six colors.



### Dimensions\*



\* Files CAD 2D - 3D available for download at [www.arper.com](http://www.arper.com)

### Base Finishes



CRO  
Chrome  
finish  
steel

### Shipment details

Art. 4202	kg	m <sup>3</sup>	lb	ft <sup>3</sup>
1 PCS = 2 boxes	11.92	0.355	26.3	12.537
4 PCS = 2 boxes	34.38	0.484	75.8	17.092

### Materials

Polypropylene



PP  
Polypropylene  
6 colors

# Duna 02 Lounge / 4 Legs

## Design by Lievore Altherr Molina, 2014

---

### Options and accessories



1

1 Set of glides

# Duna 02 Lounge / 4 Legs

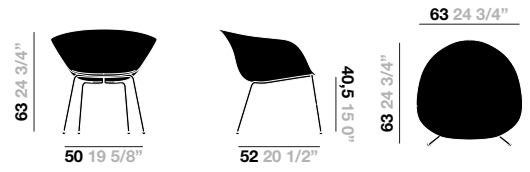
## Design by Lievore Altherr Molina, 2014

**Art. 4222: lounge chair with 4 legs base and polypropylene shell with cushion**

Chair with chromed or powdercoated steel 4-leg base. Polypropylene shell available in six colors, with cushion in leather, faux leather, fabric or customer's own material applied on the seat surface.



### Dimensions\*



\* Files CAD 2D - 3D available for download at [www.arper.com](http://www.arper.com)

### Base Finishes



CRO  
Chrome  
finish  
steel

### Shipment details

Art. 4222	kg	m <sup>3</sup>	lb	ft <sup>3</sup>
1 PCS = 2 boxes	11.92	0.355	26.3	12.537
4 PCS = 2 boxes	34.38	0.484	75.8	17.092

### Materials

#### Polypropylene



PP  
Polypropylene  
6 colors

### Carded In fabrics by **kvadrat** and No Stain



# Duna 02 Lounge / 4 Legs

## Design by Lievore Altherr Molina, 2014

---

Carded In Faux leather, Soft leather and Chrome Free leather by **elmo**.



PI  
Faux  
leather



PF  
Soft  
leather



ES  
Elmosoft®  
Leather

---

### Graded In Fabrics by

**kvadrat**

[www.kvadrat.dk](http://www.kvadrat.dk)

**camira**

[www.camirafabrics.com](http://www.camirafabrics.com)



[www.fidivi.com](http://www.fidivi.com)

**Gabriel**

[www.gabriel.dk](http://www.gabriel.dk)



[www.spradling.eu](http://www.spradling.eu)

 **climatex**

[www.climatex.com](http://www.climatex.com)

**Serge Ferrari**

[www.en.sergeferrari.com](http://www.en.sergeferrari.com)



[www.winter-creation.com](http://www.winter-creation.com)

**DESIGN  
TEX**

[www.designtex.com](http://www.designtex.com)

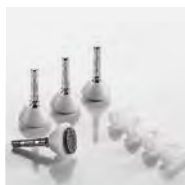
**maharam**

[www.maharam.com](http://www.maharam.com)

Visit the company website [www.arper.com](http://www.arper.com) to view the available fabrics and swatches

---

### Options and accessories



1

1 Set of glides

# Duna 02 Lounge / 4 Legs

## Design by Lievore Altherr Molina, 2014

**Art. 4212: Lounge chair with 4 legs base and polypropylene shell with front-face upholstery**

Lounge chair with chromed steel 4-leg base and polypropylene shell available in six colors, with front upholstery in leather, faux leather, fabric or customer's own material.



### Dimensions\*



\* Files CAD 2D - 3D available for download at [www.arper.com](http://www.arper.com)

### Base Finishes



CRO  
Chrome  
finish  
steel

### Shipment details

Art. 4212	kg	m <sup>3</sup>	lb	ft <sup>3</sup>
1 PCS = 2 boxes	11.92	0.355	26.3	12.537
4 PCS = 2 boxes	34.38	0.484	75.8	17.092

### Materials

#### Polypropylene

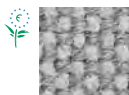


PP  
Polypropylene  
6 colors

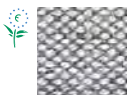
### Carded In fabrics by **kvadrat** and No Stain



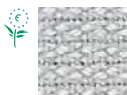
Topas 2



Hallingdal 65



Remix 2



Cava 3



Pro 2



Clara 2



Tempo



Divina MD



Scuba



No Stain



Divina 3



Divina  
Melange 2



Tonus 3



Field



Steelcut Trio 2



Sunniva



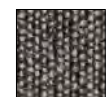
Steelcut 2



Pause 4



Canvas



Savanna

# Duna 02 Lounge / 4 Legs

## Design by Lievore Altherr Molina, 2014

---

Carded In Faux leather, Soft leather and Chrome Free leather by **elmo**.



PI  
Faux  
leather



PF  
Soft  
leather



ES  
Elmosoft®  
Leather

---

### Graded In Fabrics by

**kvadrat**

[www.kvadrat.dk](http://www.kvadrat.dk)

**camira**

[www.camirafabrics.com](http://www.camirafabrics.com)



[www.fidivi.com](http://www.fidivi.com)

**Gabriel**

[www.gabriel.dk](http://www.gabriel.dk)



[www.spradling.eu](http://www.spradling.eu)

**climatex**

[www.climatex.com](http://www.climatex.com)

**Serge Ferrari**

[www.en.sergeferrari.com](http://www.en.sergeferrari.com)



[www.winter-creation.com](http://www.winter-creation.com)

**DESIGN  
TEX**

[www.designtex.com](http://www.designtex.com)

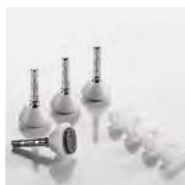
**maharam**

[www.maharam.com](http://www.maharam.com)

Visit the company website [www.arper.com](http://www.arper.com) to view the available fabrics and swatches

---

### Options and accessories



1

1 Set of glides

# Duna 02 Lounge / 4 Legs

## Design by Lievore Altherr Molina, 2014

**Art. 4232: Lounge chair with 4 legs base and fully upholstered shell**

Lounge chair with chromed steel 4-leg base. Shell fully upholstered in leather, faux leather, fabric or customer's own material.



### Dimensions\*



\* Files CAD 2D - 3D available for download at [www.arper.com](http://www.arper.com)

### Base Finishes



CRO  
Chrome  
finish  
steel

### Shipment details

Art. 4232	kg	m <sup>3</sup>	lb	ft <sup>3</sup>
1 PCS = 2 boxes	11.92	0.355	26.3	12.537
4 PCS = 2 boxes	34.38	0.484	75.8	17.092

### Materials

Carded In fabrics by **kvadrat** and No Stain



Carded In Faux leather, Soft leather and Chrome Free leather by **elmo**.



PI  
Faux  
leather

PF  
Soft  
leather

ES  
Elmosoft®  
Leather

# Duna 02 Lounge / 4 Legs

## Design by Lievore Altherr Molina, 2014

---

Graded In Fabrics by  
**kvadrat**

[www.kvadrat.dk](http://www.kvadrat.dk)

**camira**

[www.camirafabrics.com](http://www.camirafabrics.com)



[www.fidivi.com](http://www.fidivi.com)

**Gabriel**

[www.gabriel.dk](http://www.gabriel.dk)



[www.spradling.eu](http://www.spradling.eu)

 **climatex**®

[www.climatex.com](http://www.climatex.com)

**Serge Ferrari**

[www.en.sergeferrari.com](http://www.en.sergeferrari.com)



[www.winter-creation.com](http://www.winter-creation.com)

**DESIGN  
TEX**

[www.designtex.com](http://www.designtex.com)

**maharam**

[www.maharam.com](http://www.maharam.com)

Visit the company website [www.arper.com](http://www.arper.com) to view the available fabrics and swatches

---

### Options and accessories



1

1 Set of glides

arper

F +39 0422 791800

T +39 0422 7918

[www.arper.com](http://www.arper.com)