

Duna / 5 Ways

Design by Lievore Altherr Molina, 2000

Art. D020: 5 way base and polyethylene shell
 Art. D005: 5 way base and upholstered shell

Chair with polished aluminium five-star base, mounted on self-braking castors and fitted with gas mechanism. The polyethylene shell is available in a wide range of colours or upholstered in leather, faux leather, fabric or customer's fabric.



Dimensions*



* Files CAD 2D - 3D available for download at www.arper.com

Base finishes



LU1
 Polished
 aluminum

Shipment details

Art. D020	kg	m ³	lb	ft ³
1 PCS = 2 boxes	18.33	0.41	42.064	14.479
4 PCS = 2 boxes	65.6	1.14	151.237	40.259
Art. D005	kg	m ³	lb	ft ³
1 PCS = 2 boxes	18.33	0.41	42.064	14.479
4 PCS = 2 boxes	65.6	1.14	151.237	40.259

Materials

Polyethylene

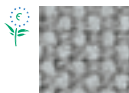


PE
 Polyethylene
 9 colors

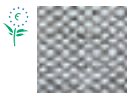
Fabric by kvadrat and No Stain



Topas 2
 67 colors



Hallingdal 65
 58 colors



Remix 2
 49 colors



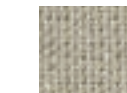
Cava 3
 49 colors



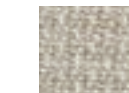
Flora 2
 33 colors



Pro 2
 35 colors



Lazio 2
 28 colors



Clara
 28 colors



Tempo
 22 colors



Divina MD
 27 colors



Scuba
 24 colors



No Stain
 34 colors



Divina 3
 56 colors



Divina Melange 2
 24 colors



Tonus 3
 64 colors



Field
 24 colors



Steelcut Trio 2
 49 colors



Sunniva
 12 colors



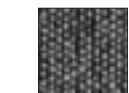
Steelcut 2
 37 colors



Pause 4
 43 colors



Canvas
 28 colors



Savanna
 13 colors

Duna / 5 Ways

Design by Lievore Altherr Molina, 2000

Faux leather, Soft leather



PI
Faux
leather
52 colors



PF
Soft
leather
13 colors

Options and accessories



1

2

- 1 Polyurethane cushion
- 2 Upholstered cushion

Fire retardant test

UK CONTRACT:
BS7176-07 Medium Hazard: Fabric (Flora 2, Pro, Tonus 3, Topas 2, Hallingdal 65). Elmosoft, Faux leather. BS7176-07 Low Hazard: Soft leather. Faux leather. Fabric (Orange 2, Divina 3, Divina Melange 2).

UK DOMESTIC:
BS5852-1 Sch.4-5 Part1: Faux leather. Soft leather, Elmosoft. Fabric (Flora 2, Divina 3, Divina Melange 2, Hallingdal 65, Tonus 3, Topas 2). BS5852-1 Sch. 4 Part1: Fabric (Pro 2).

USA Technical Bulletin 117: Fabric. Faux leather.

Resistance test

Art. D020

Art. D005

EN 1728/2000 - EN 13761/2002 6.2.2 6.7 5° EN 1728/2000 - EN 13761/2002 6.2.2 6.7 5°



only for PE

arper

F +39 0422 791800

T +39 0422 7918

www.arper.com

* For more information on product's certification and environment documents visit www.arper.com or contact us at environment@arper.com